

The Elsworth Chronicle



Holy Trinity Church

Issue No. 28

November 2010

Local Postgraduate Student to take on Cycle Jordan Challenge for Alzheimer's Society



As many of you know my father has Alzheimer's disease. Therefore when this opportunity came up to take on the Cycle Jordan challenge for the Alzheimer's Society I grabbed it with both hands! I want to help him and people in his position. It will be a tough challenge but I am hoping that by raising funds for the Alzheimer's Society more support can be provided for people with dementia, their families and carers.

I graduated at Nottingham University in the summer and now I am continuing my studies there by doing a Masters in Contemporary Middle Eastern Studies. I have signed up for Cycle Jordan - an eight day trip around the historic and beautiful Middle Eastern country of Jordan. I hope to raise over £2,500

by completing the challenge which will take place from 19 to 26 March 2011. I will be cycling between 60 and 105 kilometres for four of the eight days in this gruelling event. So certainly a challenge!

I will be joining a group of all ages and backgrounds on the trip. Landmarks on this amazing adventure include the Dead Sea, the 12th century Crusader Castle of Kerak and the ancient city of Petra. Starting in Amman, the group will cycle through agricultural villages and deserts, however there will also be one day spent exploring Petra and the final day has been kept free to discover Wadi Rum in Aquaba.

I am putting myself through my paces to train for this eight day cycling challenge which will require me to be very fit, especially given the undulating landscapes and steep climbs involved. At the moment I cycle 15 miles a week and run 2 miles twice a week. Next month I will up my training to cycling and running more and for a longer time per week. The Jordan trip will be the first time that I have ever cycled over such terrains and in such variable climates.

Jo Swinhoe, Director of Fundraising and Marketing at Alzheimer's Society said, "We are delighted that Sophie is giving her time and energy to take on the Cycle Jordan challenge for us. As a charity, we rely on the generosity of individuals like Sophie to help people live well with dementia today and fund research to find a cure for tomorrow.

One in three people over 65 will die with dementia. It is more than just memory loss; it gradually robs people of their lives and inevitably has an impact on families and loved ones. Please back Sophie in her fundraising effort so that we can continue leading the fight against dementia."

Continued

So far I have raised over £1,000 but still have a long way to go. So please support me and visit www.justgiving.com/Sophie-Thwaites Or if you do not have access to the internet, you can ring me on 07944 281541. Your support will be much appreciated.

Sophie Thwaites

**NEWSPAPERS AND MAGAZINES ARE ON SALE
ON MONDAYS THROUGH TO FRIDAYS EACH
WEEK AT BOB EMPSON'S GARAGE, ELS-
WORTH, 8AM TO 6PM**

Magazines may be ordered in advance.
We are most grateful to Bob, Linda and Mark
for providing this service. True helpful Elsworthians!

ELSWORTH CHRONICLE

Editor: Alan Farrow. The Old Rectory, Elsworth,
Cambridge CB23 4JQ Tel: 01954 267472

Material for inclusion will be most welcome.

Potential advertisers please contact the above.

BOB EMPSON & SONS

THE GARAGE

ELSWORTH, CAMBS.

We are a family-run business dealing in:

MOT: Class 3 and 4

Servicing

Bodywork and accident repair

All types of repair work undertaken

on all types of car

Full plug-in diagnostic facilities

TELEPHONE: WORKSHOP 01954 267231

BODYSHOP 01954 267878

[EMAIL: EMPSONSGARAGE@SUPANET.COM](mailto:EMPSONSGARAGE@SUPANET.COM)

Obituary

EILEEN GRANGE



On Wednesday the 4th of August 2110 a large gathering of friends and family paid tribute at Elsworth Church to the life of Eileen Grange. She had given much to the village over the years and Elsworth responded to show its warmth and appreciation.

At one time Eileen was the postal delivery lady of Elsworth, cycling along the village lanes as is done to this day. At another time she was a dinner lady at the school, and also in the immediate post-war years joined many to assist on a temporary basis with the harvesting of vegetables on the local farmland. She was very active with the W.I., holding many posts, including the Presidency. Her service was marked by her being invited to a Garden Party at Buckingham Palace in 1982.

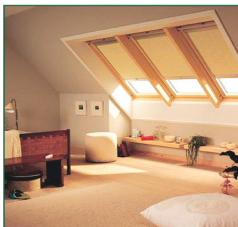
Eileen was born in Croydon in Surrey in 1911, the second of ten children. At 14 years of age she left school to enter domestic service, firstly in Croydon and subsequently in Cambridge at Madingley Road. A dance at Elsworth brought romance, for it was here that she met and was to marry Tim Grange of Grange Cottage [the house retains this name to this day] in Brook Street, but on marriage he and Eileen moved to 8 Brook Street, where Eileen was to remain

until moving to Papworth in 2005. At No.8 their three sons were born – Brian in 1942, Trevor in 1945 and Robin in 1946. Prior to the end of the Second World War the house had been overflowing with other children as during the hostilities six evacuee children came to Eileen and Tim at No.8, a house of two bedrooms!

It will be gathered from what has been written that Eileen was devoted to family life, with its care of people and home, extending in her case over several generations. Even in her later years she was clearly in her element when with her grandchildren and great grandchildren. Eileen was a warm, strong character; a person of great determination. Many will recall seeing her making her way up the Causeway hill to the post office with the aid of her walking frame. The family recall that she insisted on doing whatever she could in spite of declining health – “If I stop doing this, I shall never start again”. Eileen will be sadly missed by her family and many friends. The family extend their sincere thanks to all who generously made donations to the Papworth Day Centre in Eileen’s name.

HOMESPACE

by ADMIRAL



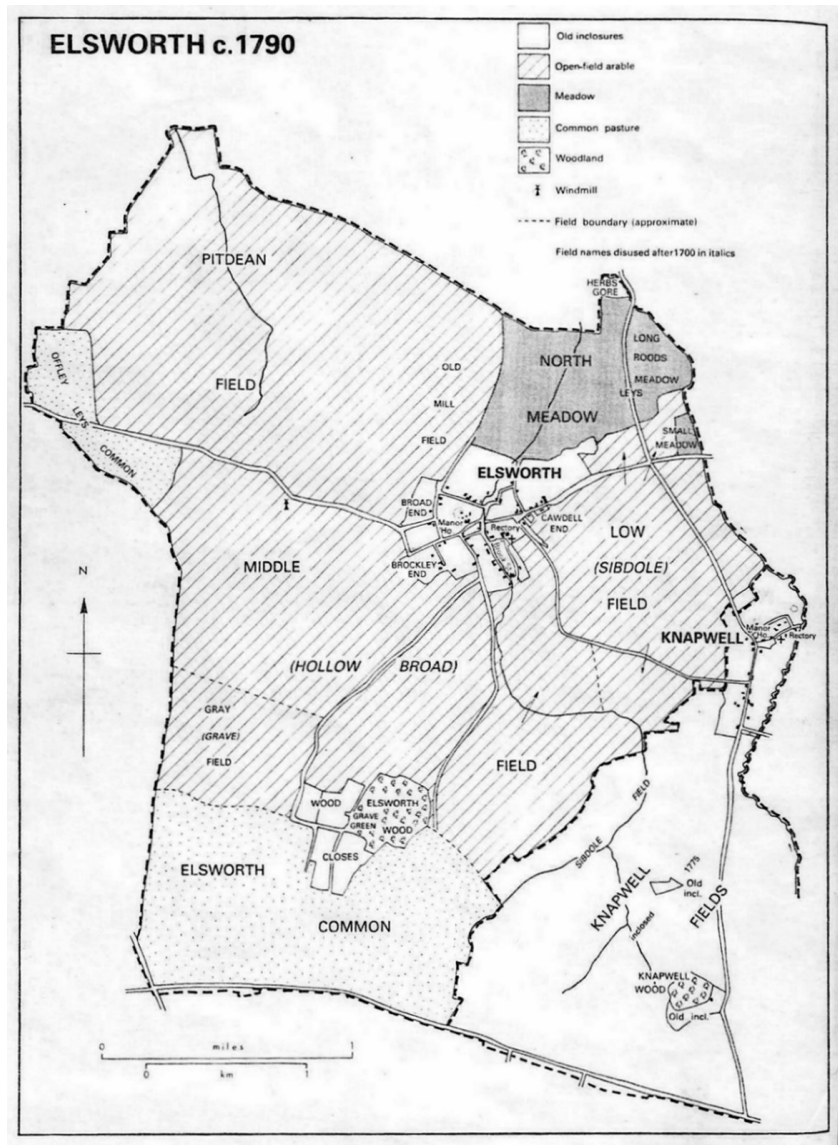
LOFT CONVERSIONS • WINDOWS • CONSERVATORIES

ERMINE STREET

Alconbury • Huntingdon • Cambs • PE28 4EW

01480 456789

TRACES OF THE PAST IN THE ELSWORTH PARISH SCENE



PRE-ENCLOSURE MAP

I wonder if villagers sometimes wonder why there are two pairs of semi-detached houses way out of the village on the present road to Cambourne. These somewhat isolated homes ‘Common Farm Cottages’ are remnants of Common Farm, which no longer exists as a separate entity, being incorporated into the Davison Farm in the 1920s.

The name is of interest, suggesting an area of common grazing before the enclosure of the fields in 1803, and a pre-enclosure map – shown opposite – confirms this. Before that time the pattern of farming was, of course, strip farming with parishioners having strips of land on each of the arable fields, with common land set aside for live-stock. Within the common strip fields isolated farmstead might also have existed, but without enclosed fields around them.

The present day landscape is rather like an old parchment through which evidence of an earlier script is in places apparent. The map of 1790 re-produced here notes the field pattern before the consolidation of land a few years later. It will be seen that at the time of the map the present Brockley Road was merely a track serving the fields south of the village. No link then with the road that is now the A428. This, perhaps throws light on why Rogues Lane was the route through the village to the Caxton crossroads, where convicted felons - robbers and murderers – were left to hang in iron cages until they died on the gibbet there, a route which was to give Rogues Lane its name. The gibbet, of course, remains on its late medieval site at the Caxton crossroads, having been restored from time to time.

Another relic of the past is the footpath from The Drift leading to Knapwell. Although perhaps difficult to imagine, this was at one time the road linking Elsworth to Knapwell. Back in the Middle Ages Knapwell lay along an east-west axis rather than north-south as at the present day, the lane to the church being the continuation eastwards. Back to the Elsworth scene, the name “Drift” is of interest, denoting as it does a track sufficiently broad to allow for the movement of livestock. For the same reason “Meadow Drift” - now a continuation from Broad End - got its name, for it was the track leading to the meadow, shown on the map, in the north east corner of the parish.

My love for dogs.

'My love for dogs' offers home boarding for your canine friend. I am a dog lover, smitten with them and my home is totally dog friendly. I am delighted to open up our home so that whilst you are on holiday, your dog has a holiday in the comfort of our home, with a totally secure garden.

I am fully insured, police checked, and have grown up with dogs all my life. Holly, our beautiful golden Labrador loves to play with new friends.

Rest assured that your dog will have at least two long walks a day either at the heath nearby to our home, or in the fields surrounding our village. We also utilise on a daily basis on local village recreation ground and play ball games there.

Should you require any further details please do not hesitate to call Amanda Bishop on 07903 806750. We are based in a small village near Royston in Hertfordshire.

HOME DOG
BOARDING



A VIEW FROM THE BACK BENCH WITH ALICE

Unfortunately very few parishioners attend parish council meetings, as they are entitled to do. That being so, the purpose of this column is to give a non-executive view of proceedings as seen from the Back Bench or, perhaps, by observers dropping in to a seat at the rear.

Sometimes meetings might seem rather mundane as councillors come to grips with basic matters essential to the smooth running of the village. At times, though, it unexpectedly veers off on to an uncharted route, even taking us into the world of **ALICE IN WONDERLAND**. Some may have seen from the council Minutes an unexpected complaint against Councillor Farrow towards the end of last year - action was proposed, but then silence with the matter apparently buried and not discussed further, with the criticism not being justified or refuted; and it remains as such to this day, left in Limbo. The unexpected rebuke took us, with Alice, into a situation where everything seemed topsy-turvy and absurd. The occasion reopened the case of the demolition of the sluice, which regretfully occurred against the advice of a consensus of consultant water engineers. An impartial observer might well have been amused and not a little surprised. In essence, events unfolded as noted immediately below

1. A post-holder of the council made a complaint against a councillor [me] – without prior notice – alleging that I had brought the council into disrepute *[by reporting a matter in which the complainant had been an accomplice – although this was not as it was presented]*
2. The complainant considered the chairman should stand down as the subject related to him in part. This was agreed after some discussion and the **complainant took the Chair!** *[In Alice it would be a case of the judge giving up his place to the complainant on the grounds of impartiality!]*

Continued

3. Back to Elsworth, the complainant, now prosecutor and in the Chair, with the authority of the new position, denied the accused a request to answer the charge. [*In Alice it would be as if the prosecuting barrister, now elevated to the position of judge, would not allow a statement from the accused although the councillor had made accusations. An added absurdity would have been that the accuser-cum-judge had been an accomplice in the events on which the person in the dock had commented. The factual comment not the doubtful deed was the matter for censor!*]

Unexpectedly the matter rumbles on, albeit with an element of farce. This latest stage is not so far removed from **Alice**:

“I’ll be judge, I’ll be jury” said cunning old Fury: I’ll try the whole case, and condemn you to death”.

It was decided that the accusations should be put to The Standards Board, which rebutted the application. We must now move on, or rather, like Alice, to return to the beginning. The course of events at parish council meetings are not always predicable. Personal criticism should not occur, but if it does the answer must lie in objectivity, perhaps linked with humour, but certainly not in animosity. I am sure this is the approach of the majority on the council – on the whole an affable group. Although not intended as such, it was an unexpected humorous interlude and is now written as such, with recognition of the absurd. It is pleasing to note that after this excursion with ALICE, the council could focus on events on the agenda objectively, without outwash from the journey. Come and witness our deliberations at council meetings – you do not have to stay for the whole meeting.

Background Notes

1] Four consultant water engineers, together with the Environment Agency engineers, opposed in writing and verbally the weed screen

Continued

scheme of the parish council, all favouring instead installation a little upstream by the footbridge. These letters/reports of the consultants, although received, were never discussed by the council. Some £12,000 plus was spent on the new weed screen and the demolition of the 19th century sluice, **but flooding occurred** with the February rains after installation.

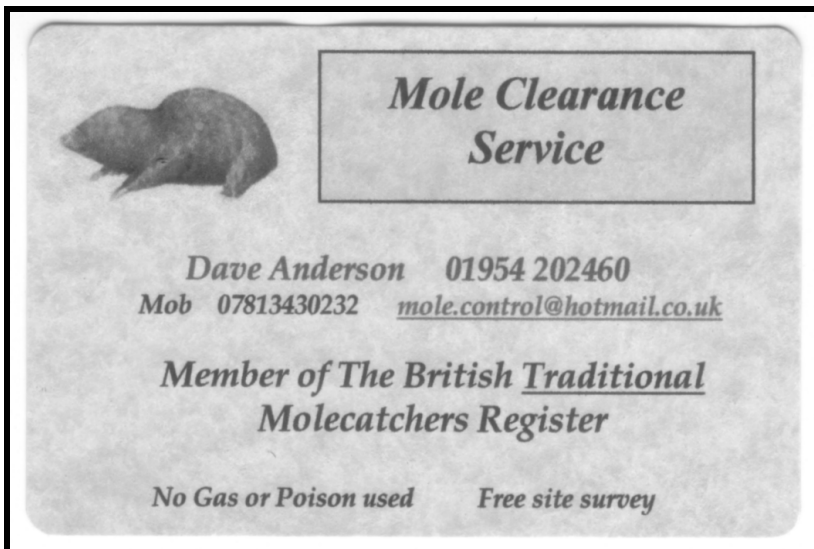
2] An article personally criticising AWF appeared in the Elsworth Times.

3] AWF responded in this journal to the article, taking up the points made in the Elsworth Times. Quotations from letters from the Environment Agency were given which showed the Agency's opposition to the parish council's proposed sluice scheme, contrary to the intended impression given in the Elsworth Times article.

4] Unresolved charge

5] Standards Board rebuts parish council's request to consider the matter.

AWF



The George and Dragon Elsworth

*Specialising in Fresh Seafood,
Prime Scottish Steaks, Fine Wines and Real Ales*



Tel: 01954 267236

At The George and Dragon we offer a superb variety of fresh fish, for example, Dover Sole, Sea Bass, Lobster, Cromer Crabs, to name but a few.

We also have a variety of Prime Aberdeen Angus Scottish steaks, as well as the highest quality English Lamb and British Pork and Chicken.

- **Family Sunday Lunch**
- **Two Dining Rooms with seating for 70 and 30**

For more information including our regular and special menus see our website at:

www.georgeanddragon-elsworth.co.uk

*G & D Caterers for all your
outside catering needs*

ELSWORTH LUNCHES

In a previous edition of the Chronicle an idea was mooted that perhaps a village lunch, possibly every other month, might be a welcomed addition to the Elsworth social calendar. The venture was subsequently promoted in the April edition of the Chronicle and has proved a marked success. Our last gathering saw 29 of us feasting happily together. To date we have had three village lunches and all have attracted over twenty people.

The George & Dragon has been most helpful. The food is first class and the cost to us reduced to £7.50 for a two course meal, + 50p for coffee if required. This is superb value.

As well as good food, our gatherings are occasions of fellowship, laughter and good cheer. Our November meal – on the 23rd – will have passed by the time these notes are read, but we shall meet every other month in the New Year for as long as there is the demand. New faces are made very welcome. Meals are at 1pm, with some gathering from 12.30 for a pre-lunch chat. Please telephone Isobel or Alan Farrow [267472] or e-mail on farrow16@googlemail.com for further information and to be put on our contact list.

AWF

Village Vet

The vet your pet would choose



RCVS
ACCREDITED
PRACTICE
CORE STANDARDS

- compassion and kindness at all times
- expertise and facilities second to none
- 24/7 emergency cover
- loyalty scheme and pet insurance available
- care for the environment and local community



Longstanton
34 High Street, Longstanton CB24 3BS
01954 780027

Cottenham
66 High Street, Cottenham CB24 8SA
01954 252122

24 Hour Emergency 0845 500 4 247

www.villagevet.co.uk

Curious,

but not everyone knows
we do pensions

We do.

Call 01954 210007 for more
information or pop into the office
to talk to Jeremy Risebrow,
Steven Gould or Peter Brewer
at NFU Mutual Office,
5 Dry Drayton Industries,
Dry Drayton, Cambridge
CB23 8AT



NFU Mutual
Celebrating
100 YEARS

Agent of The National Farmers Union
Mutual Insurance Society Limited.

We do right by you

Worth a second look

Accordng to rsceearh at Cmabrigde Uinervtisy, it deosn't mttar in waht oredr the ltteers in a wrod are, the oiny iprmoatnt tihng is taht the frsrt and ljsat ltteer be at the rghit pclae. The rset can be a toatl mses and you can sitfl raed it wouthit a porbelm. Tihs is bcuseae the huamn mnid deos not raed ervey lteter by istlef, but the wrod as a wlohe. Amzanig, huh?

Concerning children

You spend the first two years of their life teaching them to walk and talk. Then you spend the next 16 years telling them to sit down and shut up!

0800 1 690 690

www.bath-knight.co.uk

BK6361



Bath~Knight

Whatever your bathing difficulty we have the solution.

ELSWORTH SPORTS CLUB

Following their indifferent performances last season, which saw the cricket first team being relegated without winning a match, the cricketers enjoyed more success this year. The first team, playing in the CCA Junior League, Division 3C, finished the season in sixth place [of ten], winning seven, losing seven, with four not completed due to the weather.

The second team, playing in Division 4B finished the season also in sixth place [of eight], winning six, losing seven with one not completed. Hopefully next season two teams will compete in the CCA Junior League – anyone interested in playing should contact Bill Knibbs on 267266.

The local football season started in September and following pre-season training and friendly matches the two teams are enjoying early success. The first team, playing in CFA League BIS Division 1B to date have played four, winning two, drawing one and losing one [to the current division leaders] and are placed seventh of thirteen teams.

The second team have made a flying start to their season in the CFA League Division 5B, currently leading the division having played seven, winning six and drawing one, with a goal difference of thirty! Again there are thirteen teams in the division. Anyone interested in playing football or needing more information should contact Mark Brading on 01480 383303.

The table tennis season also started in September and for the third season Elsworth is fielding two teams in the Ely League. Currently the first team are third in Division 1 having played six, won three, drawn two, and losing one. The second team, consisting of younger players, are leading Division 3, having also played six, winning three, drawing one and losing two. Anyone interested in table tennis should contact Bill Knibbs on 267266.

Carpet bowls on Wednesdays, whist drives and bridge on various Fridays continue to thrive – see notice boards for the dates of these sessions. Anyone interested please come along – you will be made welcome.

Roger Fensom

Finally, a guaranteed solution for your flat roof problems, proven to last over 40 years!

Does your roof suffer from any of these signs?

Moss growth • Cracks or bumps • Leaks • Expired guarantee •
Or is it more than 5 years old?

**Stop! Replace it now, replace it permanently
and prevent misery from a leaking roof.**

Before



After



Unlike felt, RubberBond EPDM will not split, leak or crack and it's tough enough to walk on. Installed in full compliance with the revised Building Regulations of April 2006!

RUBBERBOND

EPDM ROOFING SYSTEMS
APPROVED INSTALLER



Call **NOW** for your **FREE**, no obligation quotation - valid for 12 months.

01223 258049

Lines open 24 hours a day, 7 days a week



therubberroofingcompany.com

COMMUNITY CAR SCHEME

You may have noticed in the Autumn edition of the South Cambs magazine a map showing the dearth of voluntary transport schemes in the west of the South Cambs district, with Elsworth being shown without a scheme. Actually regarding Elsworth this is not so, as a service is provided for those needing transport to the Papworth surgery.

However we do lack a service which would be available for those without a car, which would provide transport for social and domestic purposes, for example travelling to a hospital or dental appointment, a railway station or to where a particular bus route exists, or perhaps to a social function.

To seek a remedy, AWF has been in touch with Jane Hurst, the South Cambridgeshire Development Officer of Care Network Cambridgeshire, who has this responsibility in our area. We could set up a framework in the parish, but rather than embark on what would be a somewhat time-consuming undertaking, demanding much of volunteers, it would seem sensible to link with an existing network at St. Ives through which transport may be arranged by contacting the facilitator whose number would be advertised. The cost to the passenger is 40p a mile. A seeming disadvantage for Elsworth users is that charges would include the mileage to and from the driver's home, most probably near St. Ives. However, if drivers could be enlisted from Elsworth, those in this and the neighbouring parishes would incur less expense.

The immediate need, then, is for voluntary drivers to come forward. The 40p a mile noted above is the driver's entitlement for the cost of petrol and general maintenance of the vehicle. In case of misgivings, it should be pointed out that a voluntary driver is part of a team, and has every right to decline a journey when it is inconvenient, in which case the facilitator would contact another driver. I do hope many will be interested.

Continued

In case of any doubt, it should be stressed that the scheme outlined above is quite separate from the Surgery Car Scheme, which continues to operate as usual.

A postscript may now be added. Since this article was prepared for publication, the St. Ives Volunteer Bureau is circulating details of the scheme. Salient points are noted below:

Potential Drivers

The need for volunteer drivers in Elsworth is reiterated. Drivers find it a very worthwhile activity.

Users

1. Volunteer drivers will pick you up from your door and take you [and a companion] to your chosen destination. If your visit will be under an hour the driver will wait for you and take you home. If it is a longer trip your driver will return at an agreed time.
2. The Bureau needs to know of any difficulties you may experience in getting in and out of a car and whether you need to take a wheel chair so as to find a suitable car/driver.
3. Three day's notice is normally required to arrange a journey.
4. If you would like to know more about this service or book transport, please telephone 01480 301462 during office hours [12.30 to 3 pm Monday to Thursday] or leave a message for your call to be answered.

AWF

THE JUBILEE CLUB

On the first Thursday of most months we meet in Elsworth School Hall from 2.30 to 4.30 pm and welcome anybody who would like to meet others of the local villages, have a chat, listen to a speaker [we cover many subjects] and then enjoy refreshments and a raffle.

We have two coach trips during June and July and will be having our New Year lunch at the George and Dragon on Thursday, 6th January 2011.

If you would like more information please contact Betty – telephone 267470

Betty Simcock

ELSWORTH, KNAPWELL & CONINGTON WI

Since our last report, the number of members has increased to 28. We meet at Elsworth School on the second Wednesday of each month, except August. For most meetings there is a talk and/or a demonstration given by an invited speaker. The subjects cover a wide range with recent examples including; French craftwork, Lavenham village, Home from Hospital Scheme, SOS Children Villages and the most recent this November – Growing old disgracefully!! All the members are now looking forward to our annual Christmas Party which will include entertainment by our own drama group.

Visitors are always welcome. If you are interested, please contact Lyn Hogan (267254) or Isobel Farrow (267472).

Lyn Hogan (President)

MADINGLEY MULCH

YOUR GARDENS FAVOURITE PEOPLE

***BARKS * SOILS * MULCHES * COMPOSTS *
CONDITIONERS***

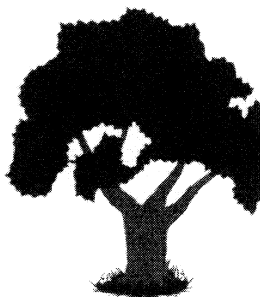
**ALL DELIVERED IN OUR BIG 1 METRE
BAGS TO YOUR DOOR.**

***SOFT/SHARP SAND ~ 10/20mm GRAVELS ~
BALLAST ~ LIMESTONE ~ CEMENT***

**CAN BE COLLECTED FROM OUR YARD
OVER WEIGHBRIDGE OR DELIVERED
LOOSE ON OUR
TRANSPORT OR IN 1/2
METRE BAGS**

***COME AND VISIT OUR
NEWLY OPENED
GARDEN/DIY SHOP***

***MADINGLEY ROAD
COTON
CAMBRIDGE CB3 7PH
Tel: 01954 212144***



Eco-safe Cleaning Services Ltd

Free phone 0800 756 9849

Eco-friendly Cleaning Service specialising
in the following areas:

- House keeping service
- Carpet & Upholstery Cleaning
- Carpet & Upholstery stain protection
- House Cleans
- Office Cleans
- Commercial Cleans

OAP discounts available

Fully trained police checked staff

Locally owned and operated

Equipment and cleaning solutions supplied



www.ecosafecleaning.co.uk
enquires@ecosafecleaning.co.uk

Eco-safe Cleaning Services Ltd Registered in England & Wales NO. 6865079
Registered office Alexander House 38 Forehill, Ely, Cambs CB7 4AF