

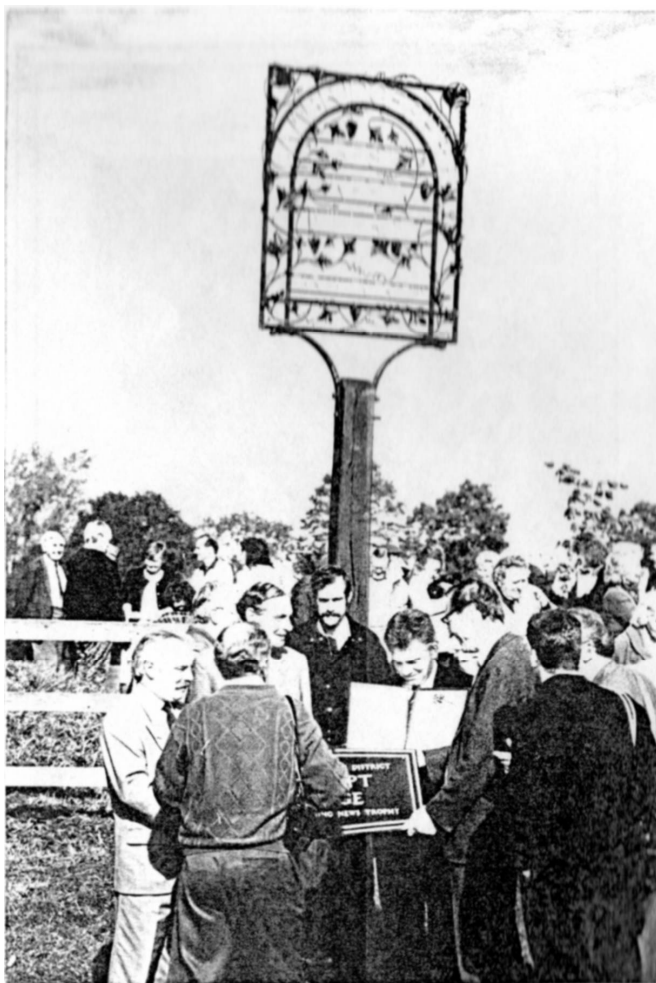
The Elsworth Chronicle



Issue No. 8

December 1994

After the Presentation



Best Kept Village Competition

Although there can be few people in the village not aware that Elsworth has been adjudged the best kept village in Cambridgeshire, it is nevertheless an event so noteworthy that it must be recorded on these pages as a tribute to the people of Elsworth.

N. Scarfe, in his Shell Guide to Cambridgeshire published in 1983, commenced his description of Elsworth with the following words, "It is a beautiful elm shaded [still in 1982] village, lying in a broad saucer of shallow slopes." Few would doubt the value of our heritage. But villagers of the present have clearly gone beyond mere acceptance and so cherished our environment that for the first time in its history Elsworth has won the highest acclaim.

We are justifiably proud of our village. Clearly there is a strong sense of belonging. It is significant how many people move within the village rather than move out when a different size of house is required. Heartiest congratulations and thanks are in order from one to another. Of course, some have contributed more than others and most of us are aware of our debt, but in the main it has been a collective effort. It should be remembered that all the villages of Cambridgeshire were considered -252 in total; it is not a competition which solicits entries.

Below are notes which mark our progression to the County award and possession of the Fairhaven trophy. Only once has the County award been won by a village on more than one occasion. Let us create a precedent by winning on three successive years. It is quite an undertaking to move the Fairhaven trophy and it seems so happily situated with two other similar signs - the village and The Poacher' - in close proximity.

Competition Summary

Initially all villages were grouped into categories of over or under 1,000 inhabitants. Later, group winners were compared, size no longer being a factor. Villages were clustered according to district: South Cambridgeshire, Huntingdonshire, East Cambridgeshire, Peterborough, Fenland.

First Round

Elsworth came first in a group of eight small villages.

Second Round

In the second round the nine group winners were divided into two sections, the two winners, Elsworth and West Wrating going into the final.

Final (South Cambs. villages under 1000 inhabitants)

Elsworth was adjudged the best kept village.

Overall District Championship

The best kept village in South Cambs. with a population over 1000 was similarly being determined. Steeple Morden, the winner of this category was then compared with Elsworth. Elsworth was declared the District champion.

County Trophy

The four overall district winners were compared and Elsworth emerged as the best kept village in Cambridgeshire, to take the Fairhaven trophy.

A.W.F .

ROBIN HUGHES-PARRY & ASSOCIATES
VETERINARY SURGEONS

34 HIGH STREET
LONGSTANTON
CRAFTS HILL (0954) 780027

66 HIGH STREET
COTTENHAM
COTTENHAM (0954) 52122

SURGERY HOURS (by appointment)

LONGSTANTON
Mon. - Sat. 8.30 - 10.30 a.m.
Mon. - Fri. 5.00 - 7.00 p.m.

COTTENHAM
Mon. - Fri. 9.00 - 10.30 a.m.
Mon., Tues., Wed., Fri. 4.30 - 6.30 p.m.
Saturday 9.00 - 11.00 a.m.

VISITS AND OTHER TIMES BY ARRANGEMENT
PETS - HORSES - FARM LIVESTOCK
24 HOUR EMERGENCY SERVICE
Stockists of Iams and Eukanuba petfoods



The Thirty Eighth Elsworth and District Show Saturday 3 September 1994

The Show this year was a great success, the number of entries was way up on last year as were the number of people who attended. Our Show was opened by Mr Graham Parker, the BBC Weatherman (was that why the rain stayed away until the auction started?) who, together with his wife, stayed the whole afternoon and went home happy and laden with all sorts of goodies they had purchased. The display of dance by the Pan Muir School of Dance was spectacular. Each performer was a star and the writer of this piece did not discover until afterwards that the number of dancers had been depleted through holidays and a case of illness. That was true professionalism. The Committee very much hope that if we are very, very nice to them they will come and see us again.

The standard of entries this year was so high that the judges had a very difficult job in selecting their firsts, seconds and thirds. After much deliberation points were awarded and the following is a list of the cup winners:

Elsworth and Knapwell W.I. Cup	Mrs M. Stevens
Boxworth W.I. Cup	Mrs Wiltsher
Elsworth and District Show Cup	Mrs I'Anson
Elsworth Royal British Legion Cup	Mr I'Anson
Girls' Cup	Anna Witherow
Boys' Cup	Adam Darby
	Danny Williamson
	Craig Lewis
J. Mitham Cup	Anna Witherow
Elsworth, Knapwell & Connington W.I. Vase	Mrs I'Anson
Arnold Hodson Memorial Trophy	Mr Shanks
Elsworth and District Show Challenge Cup	Mr I'Anson

Well done to all those who won a trophy and well done to everyone who exhibited and made the Show such a success.

Next year will be the thirty ninth Show; the date is *Saturday 2nd September 1995*. The Committee would like ideas and suggestions from everyone and especially welcomes new members. The task is not onerous, one meeting per month for about seven months of the year plus a great 'push' the week before The Day. Anybody who maybe does not

want to join the committee but who would like to help will be most welcome to help us in the week before the show. Please contact a Committee member. We also want new ideas for classes and attractions - perhaps some young people have a view on what they would like to see. We want the Show to go from strength to strength so if you have any ideas or suggestions please contact either the Chairman, Susan Chapman on 267568 or Secretary, Gwyneth Gerloch on 267412. Also, watch the village notice board where the time and date of the Annual General Meeting will be posted - come and join us.

Gwyneth Gerloch

EARLY DAYS OF ELSWORTH W.I.

It is doubtful if many people today know of Mrs Adelaide Hoodless. Yet she should be venerated by all countrywomen of the world for founding a movement for women from which the Women's Institutes evolved. She was the wife of a Canadian farmer, and in 1897 she talked to 100 women in Stoney Creek, Ontario, on the urgency of setting up lectures and demonstrations in domestic science, including home and baby care. She spoke from the heart as she had lost her first-born through what she believed was her own lack of knowledge in hygiene and infant feeding.

Thus the Women's Institute movement came into being and spread throughout Canada. It crossed the Atlantic and the first W.I. was opened in Anglesey, Wales, in 1915. Its original purpose still stands today: 'to give countrywomen the opportunity of working together; to improve the quality of life in rural areas; and to provide a wide variety of educational and leisure activities'. The development was rapid, and in 1917 the National Federation of Women's Institutes was formed with an affiliation of 137 institutes. Today there are over 9000 institutes in England and Wales, of which Elsworth, founded in 1923, is one, affiliated to the Cambridge and National Federations.

An inaugural meeting was held in Elsworth school in February 1923. It was supported strongly by the Cambridge Federation, and the fee of eight shillings for the hire of the room was partly met by the Federation. Mrs Jessop, who lived at Hill Crest and whose husband was a lawyer, was elected President. She held this office until the family left the village twelve years later. She was described by Miss Throssell (the former postmistress) as 'a strict Chairman – her husband was stern too – who

had the Rule Book beside her on the table and kept everyone in order'. She saw that the evening monthly meetings began on the dot of seven o'clock with the singing of *Jerusalem*, and ended on the dot of nine o'clock with *God Save the King*...

Members of the first Committee were also elected at the inaugural meeting and a strict balance between church and chapel had to be observed according to the rules. Those who served were: Mrs Alfred Throssell of the shop in Brook Street; Mrs Kent of the shop in Boxworth Road; Miss Setchell, a school teacher, who lived with the Kents; Mrs Mark Braybrook; Mrs Buckley; Mrs William Murden; Mrs Albert Wayman of the 'George and Dragon'; Mrs Allum of 'The Plough', who became a very active member; Mrs Pentlow, wife of Mr Davison's foreman, who lived at Avenue Farm; Miss Bertha Throssell; and Miss Everett, a school teacher. The main business before these ladies was the setting up of the three Sub-committees, Games, Entertainments, and Refreshments. They agreed that in future they should meet half an hour before the monthly meetings.

The first monthly meeting took place on 21 March in the school. Refreshments were given, but it was agreed that at forthcoming meetings each member should bring sufficient food for one person and pay a halfpenny for a cup of tea, own sugar to be brought. Cups and saucers were lent by members and the rector's wife lent her urn. The Games Committee were given the task of arranging the programme and, because of the lack of funds and difficulties of transport, they drew mostly from the local community for speakers and demonstrations. Miss Everett and Miss Setchell headed the list and showed 'Constructive and Decorative Stitching' at the first meeting. Later subjects reflected the relevant needs of the time, for these were difficult days for Elsworth. The Agricultural Depression of the twenties brought financial ruin to the farmers and unemployment to the labourers. There was grievous poverty in the village, and the annual programmes show the Institute in its community education role. Practical talks were given on fruit bottling, darning, millinery, home dyeing, slipper making, wool rug making (a favourite activity for winter evenings), and thrift in old garments. Health topics were included with demonstrations on home nursing and first aid. There was no doctor in the village and Mrs Allum acted as a kind of medical orderly from her home, binding up wounds and visiting the sick. She held a First Aid box, which the Institute provided, and only those who could afford to pay were charged for the dressings etc. It became self supporting.

The coming of the Institute brought a new vigour to the social life of the village. There were dances, plays, parties and outings, and transport was by horse and cart provided Mr Braybrook, the carrier. These events brought in funds for purchasing cups, saucers, kettles, tea cloths and plates, but the question of where to meet was a constant worry. To save money members agreed to move from the school to the Technical Room up the Causeway, where the girls had their cookery and needlework lessons and the boys went for woodwork. A further move was to the Conservative Room, a fine room in the Manor where political meetings were held. Meanwhile, the Elsworth branch of the British Legion, which had been founded in 1921, was proposing to erect a wooden hut to be built by Messrs Throssell. In 1927 the Institute discussed the possibility of 'helping the boys with their hut', but the decision was deferred until the building was up. Once it was ready the W.I. gave strong support to the Legion, supplying curtains, chairs and wood for staging. In 1928 a piano was purchased and there was a controversy over whether this should be placed in the Legion Hut or the Conservative Room. The discussion was heated and a secret ballot was held. The ballot box was opened at the 1929 January meeting and the result was:

Hut 30 votes, Conservative Room 1 vote, Abstentions 9.

After that members moved with their piano and held their meetings in the Legion Hut.

All was not well with the Institute in the early thirties and it became a struggle to keep going. In February 1934 the County Chairman, Mrs Pemberton, attended the committee meeting in an attempt to ward off closure by reorganising the Branch. A new Committee was formed and a programme for the year was drawn up. Every member of the committee was given a special responsibility, and a donation of £1 from the County Federation was to be spent on obtaining better speakers. At the March (1934) monthly meeting Mrs Pemberton asked members 'to pay special attention to any person who is speaking'. A new start was made and the next meeting was a great success. Messrs Borwick & Sons showed an interesting cookery film 'which was very instructive and much enjoyed by all present, as was the Charlie Chaplin film which followed'. However, the clouds of closure did not disperse and by the end of the year no one could be persuaded to be Secretary. Worse still, the President, Mrs Jessop, was leaving the village. At the December

meeting she was thanked for all her work as President and presented with a bag and scarf. So ended the Jessop era in the history of our Institute.

Betty Evans

Sources

W.I. Minute Books and Records

Reminiscences of Mrs Noble and Mrs Throssell, as recorded at the 60th Birthday Party, 9 February 1983

Elsworth W.I. taken on the Low Farm Wall (Mrs Webb's home) at a garden party in August 1938. Mrs Webb - President.

Members of the First Committee



Jessop. Thomas? Brand. D. Desborough.

J. Desborough. Hinson. Fenson. Throssell. T. Murden. Lyon. Wayman.

Peter Buckley. Jackson. Cross. Taylor. Harper. Murden. D. Desborough. V. Desborough.
Smith. Fountain. P. Warboys. Warboys. Webb. Randall. Iggulden. Braybrook. Fountain.



About 1925-30 - looking up Causeway. On site is the bakehouse, beyond it is the Community Room built 1915 for Senior boys crafts, girls dressmaking and cookery.

PARISH COUNCIL NOTES

Water Lane

After years of pressure the county council has at last agreed to make improvements in Water Lane. For much of the year this is impassable due to surface water. Now it is proposed to raise a path at the side so that at least it will be suitable for pedestrians. At the time of writing, work on clearance has just commenced.

Bridges over the brook

It will probably have been noticed that footbridges over the brook have been renovated where necessary.

Reflective disks on the A428 (formerly A45)

Reflective disks have been emplaced on the Knapwell direction sign on the A428. Motorists found that in the dark the location of the road to Knapwell presented difficulties when travelling from the east.

Resignations

Since the last edition of the Elsworth Chronicle, Bob Empson and Malcolm Broughton have resigned from the parish council. We are most grateful to Bob and Malcolm for their work, counsel and good company.

Co-opted Parish Councillors

Since the formation of the present council following the elections of 1992, three new members have been co-opted and welcomed to serve on the council. These are Roger Fensom, Margery Blackman and Maureen Stevens.

Painting competition

As part of an effort to encourage tidiness in the village, the Parish Council has in recent years judged a painting competition highlighting this theme. In the past the competition was restricted only to pupils of Elsworth School but it has now been decided to open it to all children under sixteen years in the village. Details of next year's competition will

be published when details are received from the 'Keep Britain Tidy'* organisation.

Paper bank

Residents are asked to bear in mind that newspapers only should be placed in the paper bank in Boxworth Road. Other papers would be welcomed by Margery Blackman of the South Wing of the Manor House for use at the Wood Green Animal Refuge.

Lighting in the Drift

The amenities sub-committee has been conducting protracted discussions in the hope that lighting may be improved in the Drift beyond the church gate. It will be appreciated that the track in question is privately owned.

Local Government Review

This matter was discussed at some length at a special meeting in May. Councillors were not unanimous in their views, but on a vote it was decided to support a two-way division of the county, with Elsworth coming within a South Cambs. - East Cambs. - City authority.

Since that time, and after the expenditure of seemingly millions of pounds nationwide, the criteria was changed and the status quo, formerly not a option, was to be allowed. Back to 'Go'. The Commission has now decided that there should be no change in Cambridgeshire -subject to the approval of the Secretary of State. Much ado to little purpose!

Duncock Lane

Readers will remember the explosion of hot feelings both for and against the construction of houses at the end of Duncock Lane. After much consultation permission was given by South Cambs. planners for two, rather than three dwellings and builders are now active on the site.

Placement of 30 m.n.h. limiting sign

It will be recalled that in the last edition of the Chronicle we were able to report that the County had agreed that the sign at the west end of Smith Street could be moved further away from the limits of the village. Regretfully it hasn't proved possible to procure a suitable grass verge site and the County council is not proceeding with the proposal.

Boxworth lorry park

The latest news concerning this proposal is that the District Council is awaiting a legal undertaking from the developers regarding landscaping a 20 metre belt on the Boxworth side of the site. Development may then proceed, but not necessarily in the immediate future.

Draft Register of Electors

The Draft Register of Electors has now been compiled, Electors are advised to check details, which will be found on the village notice board. The final register will be published on the 16th February next.

Avenue Farm

Planning permission has been granted by South Cambridgeshire District Council for the conversion of farm buildings to units suitable for light industrial use.

ELSWORTH SPORTS CLUB

Cricket

The first XI finished the season in the middle of Division 2 (south) of the Cambridge Cricket Association league. After promotion to Division 6 (south) the previous season, the 2nd XI found the competition quite stiff and finished next to bottom in that league.

Football

With approximately one third of the season completed, seven games have been played in the Sunfun Holidays League at the time of writing. Of these four have been won, two drawn and one only lost. The team is currently in fifth position in division 5A, but has several games in hand owing to cup fixtures.

In the Cambridgeshire Junior Cup, Elsworth reached the third round, while in the Reg. Haig Cup the team defeated Harrington, the present league leaders.

The success of a football club depends, of course, on team work. Even so, two players, perhaps, deserve particular mention - goalkeeper Paul Reason and the enthusiastic new centre forward, Wayne Harris. Both have contributed much to the team's success.

Loyal Service

Long-service awards were made recently at the Annual General Meeting of the Cambridgeshire Football Association at Churchill College to Terry Stevens and Jo Braybrook for over twenty year's service to Elsworth football club as fixture secretary and chairman respectively. Inscribed silver trays were presented to mark the occasion. Congratulations and thanks are clearly in order. It is no exaggeration to state that hundreds of players over those years owe much to these stalwarts.

FIREWOOD FOR SALE

Ready Now !

Free Delivery

Tel: Jason Joslin 0954 210840

THE JUBILEE CLUB

The Jubilee Club started 1994 with the annual lunch at 'The Poacher', where thirty one members were regaled. In February, after the A.G.M. David Hollier gave an illustrated talk on Iceland and we look forward to further talks from this intrepid traveller. At subsequent meetings various speakers' topics ranged from South Africa to Surprise Cooking, from badges to archives. In June the Mystery Tour took us to Ely and then for a fine tea at Soham Motel; while in July the sea-side outing for members and non-members saw us at Southwold. We look forward to having a speaker from 'Traidcraft' with a stall in November and to further entertainment from the redoubtable "Dragonaries" at a pre-Christmas party.

We meet in the school hall on the 1st Thursday in the month during school time; occasionally we join with Hilton for further outings. We enjoy a pleasant 'get-together', enlivened by talks or entertainment, a 'Bring and Buy' stall, plus a good tea each month. Do come along and join us.

Betty Andrews
Secretary

Cambridge Select *Au Pair Agency*



Professional and personal attention
to you and your family's domestic
needs. Au pair girls and boys from
central and western Europe.

0954 718114 (fax and phone 24hrs)



Holy Trinity Church

Music of high quality resounded once again in the parish church on October 2nd when Ian Moore - of Cambridge Buskers Fame as well as being an organist of distinction - and the "Cambridge Voices" entertained an appreciative audience to music ranging from the eleventh century to the still flourishing Carl Rütti's "Ave Maria", including a fine rendering of Handel's chorus "for unto us a child is born" from the Messiah. Over £400 was raised for the organ fund. We are most grateful to Ian, the singers, Michael Taylor who once again opened his chapel home for a buffet supper and to all who provided food and sold tickets. It was a delightful evening.

A.W.F.

THANK YOU ELSWORTH

CAMSIGHT would like to thank the residents of Elsworth for their generosity and, in particular, the very kind people who collected on our behalf between September 19 and October 1. The village raised £94.01 towards helping blind and partially sighted people in the county. We are most grateful for this wonderful result.

A. PREVOST – Boiler Service
SWAVESEY (1969)
OIL AND GAS

Do not let your Boiler or Water Pump Break Down
this Winter. (or any time of the year)

HAVE IT SERVICED NOW By your Local Boiler Specialist

Phone Swavesey 30678 (24 hr. answerphone)
FOR SERVICING AND BREAKDOWNS

ELSWORTH NATIONAL WOMEN'S REGISTER - (N.W.R.)

Our group continues to thrive and we have enjoyed a varied and interesting programme this year. This has included several discussions - not always too serious, an Indian evening when members provided an amazing and delicious range of Indian food, a fascinating talk about Laos, walking a town trail of St. Ives, a champagne and strawberries "summer evening", a very interesting and amusing talk by a graphologist, looking back (with nostalgia or horror) to the 1970's and a "black and white" evening.

We meet approximately every three weeks at 8.00 p.m. in a member's house and not always on the same evening of the week so that if you have a regular committed evening, this should not be a problem. You attend as and when you wish. The subscription for the year is £9.00.

If you think that our group may be one you would like to join, please call either Gillian Barnes (267524) or Carol Sims (267675) for more details.

Why not come along a couple of times and see what you think? New members are always welcome and you can then find out exactly what the "black and white" evening was all about. Our programme is included in the Diary Dates section.

Carol Sims

WOMEN'S INSTITUTE

Our Summer Programme included a talk on Chiropody; "Any Questions", with Mrs Betty Evans as Chairman and a Local Celebrity Panel and in July a fine display of Scottish Dancing. In August we had an informal get-together at "The Poacher". We have since heard about reproduction furniture from an expert in the field, and a history of Cambridgeshire. For further information see "Diary Dates".

Meetings are held on the second Wednesday of the month at 7.30 p.m. in the school hall. Subscription is £12.00 per year. Why not come along and join us?

Contact: Betty Simcock (President), 24 Rogers Close, telephone 267470 or Jean Thomas (Secretary), 4 Orchard Close, telephone 267343.

New members most welcome.

SOUTH CAMBRIDGESHIRE COMMUNITY LIFELINE SERVICE

The Community Lifeline Service is provided by the District Council for all residents of South Cambridgeshire.

It is a telephone alarm service which can help the elderly, disabled and other vulnerable groups stay in their own houses with security of knowing that they can call for help in any emergency at any time, day or night.

In an emergency, help can be summoned quickly and simply at the press of a button. The Lifeline user does not need to be near the telephone as each unit is supplied with an easy to operate pendant, which when pressed activates the alarm up to a distance of 30 metres.

When the alarm is activated a signal is sent to the control centre which is staffed 24 hours a day. The control centre operator will then speak to the user of the service through a loudspeaker in the telephone and will check on what kind of assistance is required.

If necessary, the operator will then telephone one of the nominated contacts who can be a friend, relative or volunteer, to ask him or her to visit as soon as possible to offer assistance. All users of the service must nominate at least one keyholder who can be contacted in an emergency.

The Community Lifeline operates via a telephone line with plug-in socket and a 13 amp power point close by. Where potential users do not have a suitable telephone line assistance may be available with the cost of installation or adaptation if an applicant qualifies for a grant.

The Community Lifeline Service is a non-profit making service and charges to users are kept as low as possible. The "all-in" weekly charge which covers rental of the unit, monitoring by the control centre and maintenance, is currently £2.50 per week plus VAT. Under certain circumstances some users may be exempt from VAT.

If you are interested in the service or are interested on another's behalf please contact Mr John Tremlett, who is the Community Lifelines Officer on 01223 351795 extension 334.

The article below has been received from the Regional Health Authority with a request that it be included in our magazine.

EAST ANGLIAN HEALTHLINK FREEPHONE 0800 665544

Your health and your needs for health care are constantly changing and these days the health service is changing too.

People often don't know where to go to get free unbiased information about health and about the health service. East Anglian Healthlink was set up in 1992 as part of the Patient's Charter to offer the public a free service giving answers to questions about your health and your health service.

At East Anglian Healthlink we have information about where the shortest hospital waiting lists are and where specialist treatments are available in East Anglia. We can give details of national and local self help and support groups for hundreds of different illnesses or disabilities.

We cannot offer a diagnosis but we can give general information about diseases, conditions and treatments, and how to stay healthy. We can also advise on how to complain if things go wrong.

If you have any questions about health we will find the answer. This service is free and strictly confidential.

If you have a query, or just want to know more about East Anglian Healthlink telephone Jacquelyn, Michael or Sue on 0800 66 55 44, which is a freephone. The service is open from 10.00 a.m. to 5.00 p.m. Monday to Friday, with an answerphone operating outside these hours. For people who are profoundly deaf we have a voice/minicom system. Alternatively, you could write or drop in and see us at the Anglia & Oxford Regional Health Authority HQ, at Union Lane, Chesterton, Cambridge, CB4 1RF. We look forward to hearing from you.

European Nature Conservation Year 1995

COMMUNITY groups throughout Cambridgeshire are being invited to take part in European Nature Conservation Year (ENCY) during 1995.

ENCY aims to raise awareness of our local environment and the importance of community help in its conservation.

Locally ENCY is being backed by The Wildlife Trust for Cambridgeshire which will be encouraging community groups to protect and enhance their environment.

Cambridgeshire has a rare variety of wildlife habitats from the countryside to the city.

But conservation is not confined to the countryside and nature reserves - our gardens, churchyards and hedgerows are all important habitats for wildlife.

Their future is in our hands and unless we act now to conserve our environment, we could lose it forever.

We can help in hundreds of ways from installing a bird box or planting a wildflower meadow to setting up a community nature area or creating a butterfly garden.

You can spend a few hours with one of the trust's volunteer work parties or help raise funds for our work across the county.

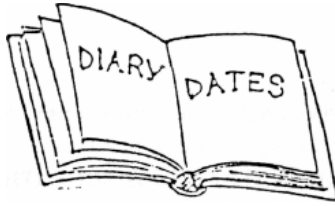
The trust has information on all aspects of conservation work, from getting started to advice with grants and practical work.

Trust staff and volunteers are offering guided walks around our reserves and talks on environmental issues to community groups.

The trust wants to hear about your projects and ideas for improving your local environment.

We can all adopt the ideals of European Nature Conservation Year by working together to save Cambridgeshire's rich environment for years to come.

For more information about the Wildlife Trust and ENCY contact Moya Winter at Enterprise House, Maris Lane, Trumpington, Cambridge, CB2 2LE, or call (0223) 846363.



December

- 15th Dec. Carol singing around the village - contact Don Barrett-Hartley.
- 15th Dec. Wildlife Trust - "In the footsteps of Charles Darwin". Botanic Gardens Cambridge. Contact (0223) 65491
- 16th Dec. Elsworth School. End of term.
- 18th Dec. Holy Trinity Church. Lessons and Carols 3.30 p.m.
- 19th Dec. Carol singing around the village - contact Don Barrett-Hartley.
- 22nd Dec. Carol singing around the village - contact Don Barrett-Hartley.
- 24th Dec. Holy Trinity Church. Midnight Service. 11.45 p.m.

January

- 1st Jan. Holy Trinity. Communion Service. 8.30 p.m.
- 4th Jan. Elsworth School. Term commences.
- 10th Jan. The Millenium - where would you like to be; with whom & how would you celebrate? N/.W. R.
- 11th Jan. W.I. Members' evening.
- 14th Jan. Elsworth Football Club v Barton.
Home fixture.
- 17th Jan. County Council budget public consultation meeting.

- 17th Jan. County Council budget public consultation meeting.
7.30 p.m. Shire Hall, Cambridge.
- 28th Jan. Elsworth Football Club v Great Chesterford.
Home fixture.
- 29th Jan. Wildlife Trust. Fen Drayton gravel pits.
Contact (0480) 454034 for details. Meet at 9 a.m.
- 30th Jan. N.W.R. Home-made word games - bring along your
favourites.

February

- 2nd Feb. Jubilee Club.
- 8th Feb. W.I. "My year as Mayoress". Miss Hazel Halter.
- 20th Feb. Elsworth School. Half-term (until 27th February).
- 25th Feb. Elsworth Football Club v Melbourn Reserves.
Home fixture.

March

- 1st Mar. N.W.R. The search for eternal youth - video & discussion.
- 16th Mar. N.W.R. Greek evening - enjoy the food, drink and music of
Greece.
- 18th Mar. Elsworth Football Club v Littlington Reserves.
Home fixture.

April

- 4th Apr. N.W.R. Who would you like to be P.M.? Choose a
non-political person & tell us why?
- 8th Apr. Elsworth F.C. v. Mott Macdomald F.C.

24th Apr. N.W.R. Cinema/theatre trip - to be arranged.

May

17 May N.W.R. Aromatherapy - a talk & demonstration by an aromatherapist.

June

8 June Planning meeting. N.W.R.

27 June Garden trail - hints, cuttings, refreshments en route. N.W.R.

We extend our sincere apologies to all contributors and readers for the delay in publishing this December edition. Illness at the publishers and a machine which broke down at a critical time were the causes.