

# **The Elsworth Chronicle**



## **MILLENNIUM CELEBRATIONS EDITION**

**Issue No. 14**

**October 2000**

## **The Elsworth Chronicle**

It has been drawn to the editor's attention that magazines do not contain a contact name, address or telephone number, thus presenting problems to potential advertisers and possible contributors from outside the village. The editor, Alan Farrow, may be contacted at The Old Rectory, Elsworth, Cambridge, CB3 8JQ. (Tel. 01954 267472)

This edition of the magazine commemorates the Elsworth week of Millennium celebrations. As the Chronicle is received by the Central Library in Cambridge, many Elsworthians captured in the photographs now illustrate historical records of life in Cambridgeshire. Were you behaving sensibly?!

## **Elsworth Millennium Week**

After many months of discussions and preparations, Sunday the 2<sup>nd</sup> of July finally dawned and the Millennium celebrations were about to commence. There was to be an event every day until, and including, the following Sunday. For many activities the village was divided into four teams of approximately the same size in terms of houses, designated N.E. [green], N.W. [blue], S.E. [red], S.W. [yellow]. Points were to be awarded as follows: 1<sup>st</sup> - 6 points, 2<sup>nd</sup> - 4 points, 3<sup>rd</sup> - 2 points. In addition, points could be gained for entering, if unplaced.

### **Sunday 2<sup>nd</sup> July**

The week commenced with a light-hearted cricket match between the villagers of Elsworth and those of Conington, played under rules slightly modified so that each player had two overs at bowling and each batsman/batswoman faced two overs. In the Elsworth side there were men and women, grandparents and children, all keen and proud to strive for the honour of the village. Similarly, there was a marked age range in the Conington team. The sight of our opponents might have been daunting for some; all in white and limbering up well.

Conington batted first. Then Elsworth's turn - noteworthy in particular for fine hockey strokes from Maureen, Julie and Catherine against balls which approached the wicket near ground level. We lost by eight runs; an exciting game, enhanced by a splendid tea and barrel of beer. Congratulations Conington.

### **Monday 3<sup>rd</sup> July**

The evening brought the first of the inter-street competitions - darts, dominoes and croquet. The pavilion buzzed with general good humour and banter as competitors and spectators gathered in and around the pavilion. The



*Conington & Elsworth Cricket Teams with close supporters*



N.W. team [blue] got off to a very good start, winning all three from S.W. [yellow], with the S.E. [red] third and N.E. [green] fourth.

Points: **N.W. 18 points, S.W. 10 points, S.E. 6 points, N.E. 5 points.**

## **Tuesday 4<sup>th</sup> July**

A question-trail by foot through the village, organised by the N.W.R., with the lure of generous cash prizes [plus points for one's team] brought many baffled/gleeful participants strolling through our lanes. Was it an observer's flight of fancy, or did some quickly move on when others came in sight, fearful, perhaps, that their gaze might give away an answer to a clue? The questions seemed well-chosen - not so difficult as to cause general frustration but not too easy so as to allow all to complete the trial with perfect answers. Of course some participants were too clever for their own good; someone thought the 'Horseshoes' was where the Roundheads would not be welcome as it implied the King's horsemen could be there, whereas the official answer was a Cavalier caravan parked in a garden in Brook Street or a Cavalier car in Brockely Road!

Results                      Individual child, Craig Lewis; individual adult,  
Jeremy Pemberton.

Points: three teams drew for first place - three points each. In addition points were gained for entering, giving event totals of:-

**N.W. 24 pts, S.E. 12 pts, SW. 11 pts, N.E. 9 pts.**

## **Wednesday 5<sup>th</sup> July**

W.I. Victorian Evening. A most interesting talk and presentation of Victorian clothes was greatly appreciated by an attentive audience. At one stage a model was gradually divested of her outer garments - the men present may well have had thoughts of a W.I. calendar which hit national headlines! The evening was divided into two distinct parts. Following excellent refresh-

ments, Jane Chapman provided great enjoyment with music on the clarinet, her programme including audience participation at one stage with a 'singalong' of some well known songs.

## **Thursday 6<sup>th</sup> July**

The Poacher was crowded on the occasion of the quiz night, which engendered a happy competitive but friendly spirit. Maureen Stevens, our quiz mistress, kept proceedings running smoothly and in good order. AN.E. team won through Paul and Celia Harding, Mary Ronan and Peter Klingpulos.

Points: **N.E. 8 pts, S.E. 6 pts, S.W. 5 pts., N.E. 2 pts**

## **Friday 7<sup>th</sup> July**

Tickets for the concert were sold out long before the day. Expectations were fully realised, the evening being a marked success. Not only were we treated to the music of the New Orleans Jazz Band of Freddie and Friends which with its vigour and tone swept us all along in spirit, and included a solo performance from our own Geoff Neaum, but we were treated to the powerful and delightful singing of Susan Valliant-Speer, whose fame in the United States had led to her being invited to the White House. Then additionally Keith Pearson and partner demonstrated what it is possible to accomplish with a banjo and guitar. The audience was enthralled. It was a great act; little wonder that Keith is a star on the Australian stage and television.

A concert of international celebrities in Elsworth was clearly an ambitious project, for which we owe a debt of gratitude to its organiser Geoff Neaum. But as well as to the musicians, tribute must be paid to the audience. It was a happy evening with people sharing jokes and rubbing shoulders with residents in the village they might otherwise not have known. The bar perhaps contributed to this, but probably more important, the inter-action between audience and players created feelings of warmth and well-being.

## **Saturday 8<sup>th</sup> July**

The programme of events was all-embracing and well organised by Maureen Stevens. There were events ranging from those for grandmothers and grandfathers to children under 5 years, with innumerable categories in between. Talents put to the test also were varied, ranging from running, throwing, bowling, cycling, prowess with balls, to the muscular power required to be successful at rug-of-war. Even an aptitude for clothes design had its place.

Events were too numerous to allow for details of results here; save perhaps one where much prior effort was demanded, namely the fancy dress which got the afternoon off to a good start. Elizabeth Hobson was the winner of the junior category and Diane Woodham took first place for adults.

The races were interesting, particularly the unusual events such as running backwards at which some achieved considerable speed while others ended flat on their backs on the ground. The three-legged races followed a similar pattern. One of the slow-bicycle races saw a competitor disqualified for tacking! A re-run brought a mass of adult males striving for points. People were now into the swing of things - literally; entries for throwing the wellie threatened an all-night session. In this event some seemed to have as their objective hitting spectators rather than achieving distance. More than one person had to duck or take other evasive action!

The tug-of-war competition was really competitive; the women's teams certainly matched those of the men for vigour and determination. Even so, in this and the wellie throwing competition it is clear we have many fit men in the 20-35 year age bracket in the village - it is to be hoped the Sports Club pounced and signed some up for football and cricket trials!

Points for Saturday: **S.W. 212 pts., N.W. 202 pts., N.E. 96 pts., S.E. 56 pts.**

## **Inter-street Competition - Overall Result**

The success of the S.W. team at the sports made some inroad into the lead established by the N. W. at the events earlier in the week, but the final tally revealed that the N. W. was the overall champion team and winner of the championship plaque. To participating residents of Smith Street, Broad End, Paddock Row, Fardell's Lane, Fanklin's Close, Rogues Lane, many congratulations.

Final points: **N.W. 246 pts., S.W. 238 pts, N.E. 118 pts., S.E. 80 pts.**

## **Sunday 9<sup>th</sup> July**

It had been rumoured that a jazz band and an organist had been booked for the Millennium church service - were we to be treated to a unique combination of instruments or even in part a duet of organ and ukulele?! Not so, the organ accompanied hymns during the service and the band led singing at the end.

This well attended service brought the Millennium celebrations to a fitting end with focus on what the week commemorated; that is the life on earth of Jesus and 2,000 years of Christianity.

## **Post Script**

I should like to thank publicly and very sincerely colleagues on the Millennium Committee, particularly Maureen Stevens and Geoff Neaum, for their support and hard work, as well as members of the W.I, N.W.R. and Sports Club who gave up many hours to committee discussions and organising events before and during the Millennium week.

*AWF*



*The rule was that books should not be supported!*



*Inter-street Tug of War*

# Parish Council Notes

## Vandalism

For the first time in living memory, the last three months have seen occurrences of mindless vandalism in the village. Firstly, in July the bus shelter was target for meaningless graffiti and now an attempt has been made to disfigure the same building by smashing eggs there. This is particularly disappointing as parish councillors had given up time and energy to cleaning and re-vamping the shelter following the graffiti marking.

That certain young people should be engaged in wanton damage to the environment is bad enough; but even worse is the realisation that in the village there are people who behave as no one before has seemingly done. It is so pointless - a child of three could easily have behaved similarly. Those involved certainly need guidance and parents are asked to help by taking responsibility where the youngsters clearly cannot and take appropriate action to assist the culprits to mature. In the case of the smashing of eggs it would probably have been noticed that stocks at home became depleted around or a little before August 25/26<sup>th</sup>.

The people responsible for defacing the bus stop in the first instance became known, and to their credit they made an effort to rectify matters and hopefully were subsequently sorry for the trouble caused. As yet the culprits behaving childishly with eggs are not known with a degree of certainty, but no doubt it will soon come to light as to who is to blame. In the interests of all, parishioners are asked to be vigilant and report to any parish councillor any suspicious behaviour. Comments will be treated in strict confidence. Those who disfigure our attractive village harm it for themselves as much as for anyone else. In addition to the above incidents, it would seem that recently the interior of the caravan on the sports field was deliberately damaged.

If the culprits cannot be helped to take us back to what has always been the code of conduct in the village, recourse could be made to the law. It is,

of course, a criminal offence to damage and deface property. Let us hope there will be no future cause to consider involving authorities outside the village.

Looking at the matter from another viewpoint, it is clear the parish council has to respond to what has happened. Its welfare sub-committee has met with some teenagers to discuss events and consider the attitudes of the young. The lack of facilities was raised. The parish council is of the view that if there is demand and parents were prepared to pay £2 for a return journey, a minibus service to Swavesey Village College youth club on certain evenings could be arranged and perhaps a meeting place made available in the village if there is sufficient interest.

## **Rural bus link**

Rural transport was touched on in the last edition of this magazine. In view of possible funding from the Government for proposals to improve rural transport facilities, the parish council presented a scheme to the County whereby Elsworth and the surrounding villages would be linked by mini-bus to Bar Hill. Such a service would provide a link with the principal bus routes to Cambridge and elsewhere as well as facilitating shopping at Tesco. A questionnaire was compiled and circulated in the village. The scheme had the support of the County Council but at the moment hasn't attracted financial support. Re-application is intended. To all who completed the questionnaire we offer our thanks. Hopefully the scheme will be accepted on a trial basis in the not too distant future.

## **Vehicular Weight Limits**

The Chairman presented evidence at the Hilton enquiry. To proceed to the result, the Inspector recommended that the area bounded by the A1 198 and B1040 in the west, the A428 in the south, the A14 in the north and



the Boxworth-Knapwell roads in the east should be limited to vehicles not exceeding 7½ tonnes, with the exception of those serving the area. Elsworth, of course, is near the centre of the zone. It was felt that in view of the impending lorry park at Boxworth and the unsuitability of our narrow lanes for heavy vehicles that the ban was of vital importance.

## **Village Handyman**

Roger Fisher was appointed to replace Ron Stevens in February last as village handyman. Now, unfortunately, Roger has had to relinquish the post for personal reasons. We are most grateful to both for their services. There is now a vacancy. If you might be able to help, please let the Clerk or a Parish Councillor know of your possible interest.

Now that we are without a handyman, the greensward in Smith Street has been incorporated in the village contract cutting programme, and Mr Davison has kindly agreed to arrange for the cutting of the War Memorial grass in addition to work already undertaken in the churchyard. Mr Davison has also had removed the brambles and ivy from the churchyard fronting Church Lane.

## **Lighting in Duncock Lane and The Drift**

Following representations, the County Council has installed a light in Duncock Lane and an additional one in The Drift.

## **Road Gritting**

A request to add Brockley Road to roads gritted during inclement weather has not been granted by the County Council.

## **Wayside Colour**

Following a sub-committee meeting of the parish council to discuss means to enhance the appearance of the village along the roadside, councillors were delighted that Rosemary Parfitt is prepared to give assistance. Parishioners will be aware of Rosemary's interest and expertise.

## **Annual Election**

At the May meeting of the parish council, Alan Farrow was re-elected Chairman and Maureen Stevens re-elected Vice Chairman. Other appointments were: Jo Gilbert to be convener of the planning sub-committee and Maureen Stevens convener of the Welfare and Recreation sub-committee. Other conveners remain as before.

## **Millennium Celebrations**

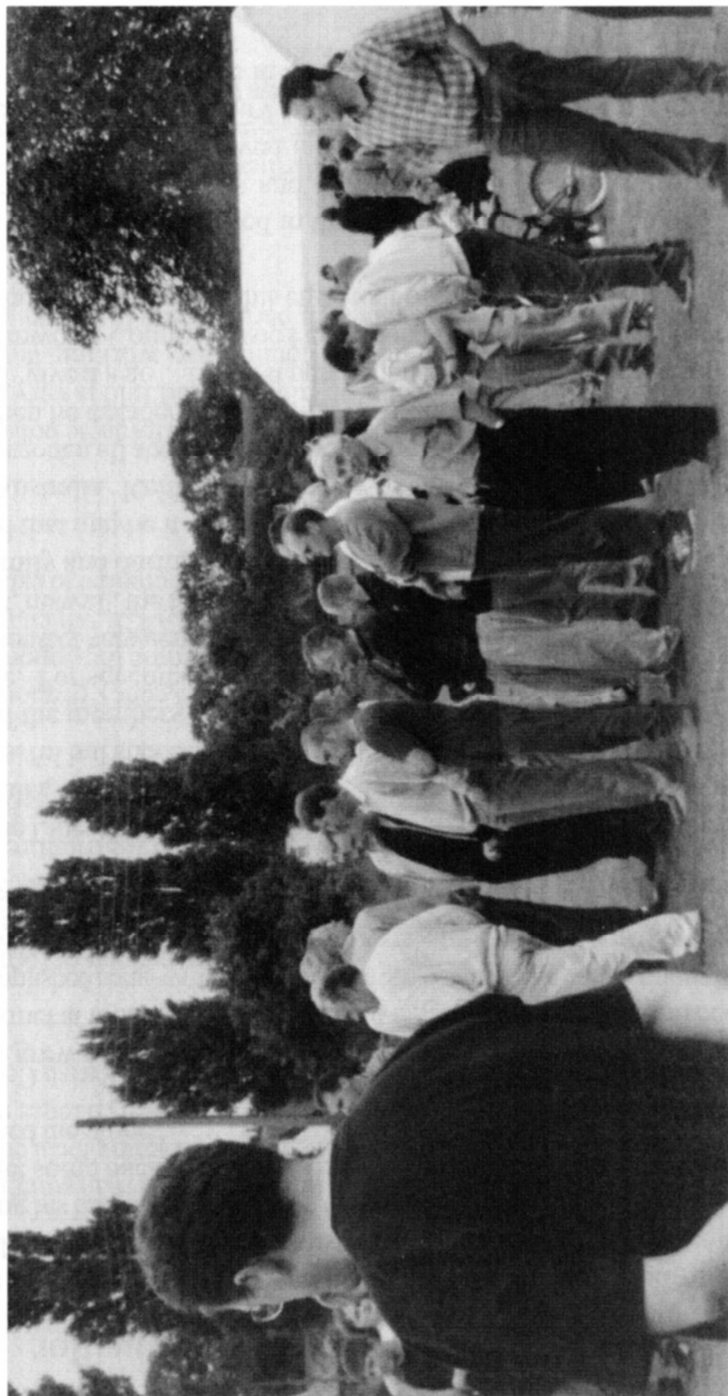
An account of the Millennium Week will be found elsewhere in the magazine. A permanent memento of the Millennium is to be provided by issuing commemorative bone china mugs to all children under 16 years of age. These also will be available on sale.

## **Millennium Project**

The Parish Council has made a grant to the Sports Club of £16,000 following the support marked in the village questionnaire for a new pavilion as Elsworth's Millennium Project.

## **New Bridge in Brook Street**

The footbridge in Brook Street near Cotterel's Lane, which had been patched previously, has now been replaced.



*Team Spirit - Competitors lining up to participate in the wellie throwing competition*

## Profile of Keith Pearson

Were you present at the concert in the school on 7 July? Did you wonder how Keith Pearson, 'star of Australian stage and television' came to be playing his banjo in Elsworth on that evening? I decided to track him down and get some background on a musical career which, it would seem, has spanned the globe.

Keith grew up in North Herts and from his teens was popular as a sole performer at folk clubs, pubs and festivals around the county and became an accomplished song-writer, winning various contests and competitions including the 'Melody Maker Folk/Rock Contests' and the 'Marlboro County Music Contest'.

Treacle Line, the band with which he is currently enjoying great success in Australia, was originally formed in Kent back in the early 80's. It was very successful but success was short-lived and the band ceased to exist when two of the members decided to make their homes in the southern hemisphere. For seventeen years they had little to do with each other and the only contact between them was the odd postcard or letter, and then in 1995, Dave Craswell, the former guitarist returned to these shores for a visit with his family and during a chance meeting with Keith in a pub in Kent, suggested that maybe it was time for the old band to reform and for Keith to visit Australia. Keith dismissed the suggestion as something of a joke and had forgotten all about it when some months later an airline ticket arrived. It was then he decided that, having no other commitments at that time, he would 'give it a go'. The first performance of the reformed Treacle Line at the Tamworth County Music Festival in NSW proved a great success and he is shortly to embark on his eighth tour of the country.

Keith is currently involved in the writing of the new TL album, giving guitar and banjo lessons and considering the possibility of a new tv series in Australia. He lived in Elsworth, in Church Lane, for much of the year, but on the expiry of the tenancy agreement has moved to a peacefully located house in Conington.

# **Annual Report from District Councillor Mark Ellwood 1999-2000**

## **Planning**

South Cambs has recently decided not to amend its local plan strategy for Elsworth. This does not prevent the inspector at the on-going local enquiry from taking a different viewpoint. However, any proposed changes would be published and put out to consultation including Elsworth Parish Council. The plan will guide all planning decisions until 2006.

In early 2001 South Cambs will begin the very lengthy process of formulating the next local plan from 2006 to 2016. Once again the Council will be consulting with Elsworth Parish Council and crucially the South Cambs local plan will coincide with the County Council Structure Plan, so at least there will be some consistency in planning policy for the whole county and district.

I have lent my full support to the recent Highways Agency proposals to upgrade the A428. This road is dangerous and I welcome the opportunity of diverting much heavy traffic away from the existing A428, which will be given over to local traffic. An opportunity will also be created to establish proper cycle paths.

## **Housing**

Land surrounding the school offers the best chance for affordable housing in the village. This land plus adjacent plots along Broad End is very heavily protected in the local plan and the council are working with the Parish Council to assess the real need from parishioners for lower priced housing.

## **Village Services**

I have asked council officers to look at the further assistance to post offices beyond the normal rate-relief that is on offer. Several councillors have recently visited the minister responsible to express the concerns of local people in relation to declining village services.

South Cambs is committed to a programme of investment in village colleges. Swavesey is included within this programme and will benefit from substantial council funding over the next few years.

Elsworth sports pavilion has also received a very large grant from South Cambs. The final figure is £20,000.

### **Finance**

South Cambs has frozen their portion of Council Tax at £50 for an average Band D house for this financial year and the next 2 years. The remaining part of your bill covers funding for the County Council, Police Authority and Parish Council. At the moment the council has very substantial reserves, is debt-free and in a very healthy financial position. Most of the reserves are earmarked for low cost housing projects and council house renovations.

### **Environment**

The Council has started to introduce trial runs for the fortnightly, kerb-side collection of recyclable material, i.e. paper, textiles and cans (not glass). Collections are due to begin in Elsworth from October 2001. Elsworth produced 48 tons of recycled materials in the last financial year.

Contacting South Cambs District Council -  
General enquiries - tel 01223 443300 email:  
scdc@scambs.gov.uk web: [www.scambs.gov.uk](http://www.scambs.gov.uk)

Contacting Mark Ellwood - tel 01954 267305  
email: [mark@ellwoodm.fsnet.co.uk](mailto:mark@ellwoodm.fsnet.co.uk)

### **VILLAGE MAINTENANCE PERSON WANTED**

**£4.50 per hour**

**Details from the Parish Clerk**

**6 Brockley Road or Tel. 267345**

## **Elsworth C. E. Primary School**

I would like to thank the Elsworth Community for the support it has given over the last five years which has contributed so much to the success of the school.

School pupil members have risen from 89 to 131 as the schools excellence has been recognised. From September there has been an extra teacher and class to make more space available and lower class size.

In this outstanding year Chris Woodhead, the Chief Inspector of Schools, has placed us as one of the forty most improved schools in the country. The Sunday Times has named us as one of the top 10 primary schools in East Anglia. We are at the top of the Cambridgeshire league tables for the second year running with 100% of our 11 year olds achieving level 4 and above in all 3 core subjects.

A new Chair of Governors will be elected in the Autumn term. Thank you for the help that you have given me.

Nicholas Wright  
Chair of Governors

### **Out of My Window Into my Soul**

I look through my window and I  
see,

A heart full of happiness,  
A landslide of love,  
A keg full of kindness,  
Warmth that is welcoming from  
above.

A cart full of confidence,  
A fever of friendship,  
A bag full of brightness,  
Lips trickle laughter a great benefit

A fair share of fun,  
And the caring has begun,  
I hope this feeling will never end.

Maddy  
Year 4

## **Reflections following the Millennium Concert**

One of the highlights of an excellent Millennium week was the concert held at the school on the Friday evening featuring international entertainers and a local trad. jazz band.

We were privileged to have such talent in Elsworth as all our performers are in great demand. Keith Pearson [Bluegrass banjo, guitar and humour] has returned to Australia to tour top venues and feature in a t.v. series following his No.1 hits over there in the Country Music and Bluegrass charts. Susan Valliant Speer [American Blues and jazz singer] is now touring top venues in England including the Hunsted Club Oxford Street, Royal Festival Hall and the N.E.C. She is also about to launch her own band based in Northamptonshire. Freddie and Friends Jazz Band has been busy locally, being resident at the Castle Lodge Hotel, Ely, featuring at the recent Chilford Hall Jazz Festival and at the Ely Maltings.

As a result of the evening's great success, a number of people have suggested that village concerts, featuring a band and top class guest stars, should become regular events, perhaps two a year - one in winter, one in summer. Given sufficient support there appears to be no good reason why this should not happen and a provisional date for the first has been set for February 2001.

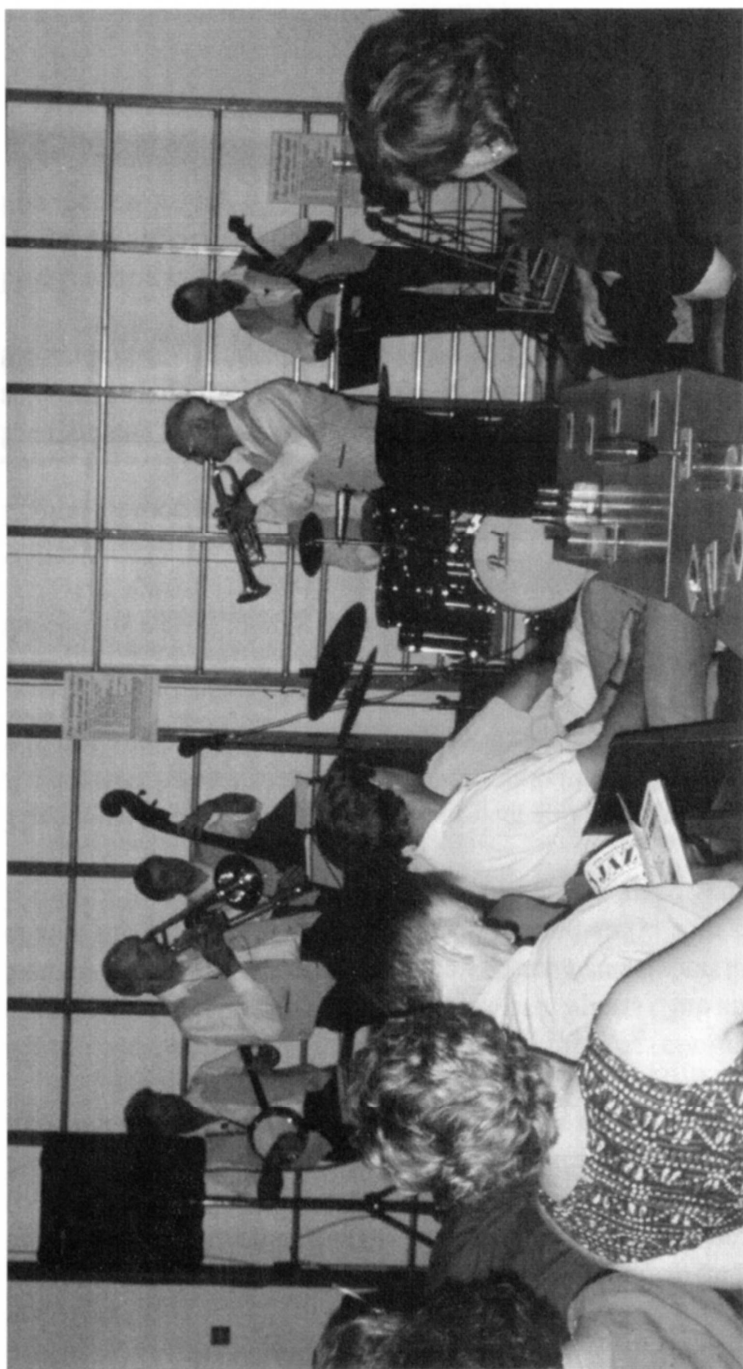
If you are in favour, and in order to give time to book a band and top guest entertainers, the organisers need to be assured of a repeat full house [limited by regulation to 100] with tickets priced at around £6.

To assess the potential support it would be appreciated if you would complete the enclosed form and return it to Randall's Cottage, 3 Brook Street, Elsworth by the end of November.

Finally the organisers wish to thank all who attended the Millennium Concert to make it the great success it was, and especially those who helped with the organisation and arrangements; in particular Miss Minter and the school children for help in setting up the hall, Catherine and Gaynor for coping with the hordes at the bar and Julie for returning the school to normality.

*GN*





*Freddie and Friends*

## **Elsworth Sports Pavilion Fund**

Elsworth Sports Club are delighted to be able to confirm (at long last) that they have been informed that the National Lottery have awarded £104,000 (one hundred and four thousand pounds) towards the new pavilion project. Needless to say, this news was greeted with great joy by those who have been working hard for the project over the past 4 years.

Mr Michael Davison (on behalf of Davison & Co) has confirmed that they are prepared to lend the Trustees of Elsworth Sports Club an interest free loan for a period of 5 years to cover our interim financial short fall, which will enable the building work to go ahead immediately. Our thanks to Mr Davidson and his family for their on going support to the Sports club.

The Sports Club anticipated that the project will be put out to tender during August, and hope the building will be completed by the new year, but this will obviously depend on how swiftly contracts are in place and signed.

The Sports Club would like to thank those parishioners who have helped the club by way of joining the club and supporting their fund raising events.

We would also like to thank Elsworth Parish Council and Elsworth British Legion for their generous donations to the new pavilion fund.

Fund raising will be continuing as we still have some way to go in order to achieve the required target, although we will not know the exact amount until the tenders are received.

Fund raising events recently held included a meal in the Poacher on 3<sup>rd</sup> August, a supper and dance in Elsworth School and a Race Night in the Poacher on Friday 6<sup>th</sup> October.

*Maureen Stevens*

## Working for Win

My mum, Win, died on April 2nd. She was 91. This is not an obituary; it is about realizing how much more influence she has had on my work - more than I have ever really understood until now. Such a loss makes you reflect on things like that.



Win did well at school. With a good pride, she told me how she used to finish off her work ahead of the other children. Like so many of her generation she was asked by the teacher to help the others. Part of my memory of her will always be of an enquiring mind, full of questions, wanting to know how things worked, and if they wouldn't work trying to mend them. She was both a thinking and hardworking woman. Nobody I have ever met worked harder.

While she was still at school there was talk of her being a teacher; but her family needed her out of school - and earning.

And so, like many able young men and women of her class, she was consigned to routine factory work. They all gave a lot, and took little; they deserved better. I think Mum was a bit bemused by how I could earn a decent wage without breaking into a sweat.

After my National service I trained to be a teacher, and within a few years I was put in charge of careers education and guidance in a London school.

It is important work, not because it has much status, but because it is about who gets to do what in our society. Young men and women need to be able to see what is available, what is worthwhile to them, what they are prepared to take on, who is trying to influence them, and why they make the choices they make. It can conjure up deep feelings. In the modern world it is one of the most important ways that we can help them.

Being my mother's son helped me to see this.

I taught for 11 years. Since 1973 I've worked in research and development institutes; and for several years now I've been doing it from home. The Old Bakehouse is an electronic cottage, exchanging information with all parts of the globe, on a daily basis. You're never alone with a modem!

I develop ways of helping teachers help their students. The message for students is this:

"You have a choice - live and learn, or live and don't learn. But to want to learn you must see that education will help you make what you do with your life both more enjoyable and more effective."

That's my work. I bet Win approves.

*Bill Law*

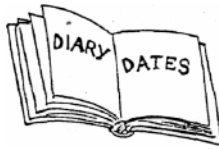
## **Bonfires**

A dry, quick burning bonfire can be delightful, but not a smouldering, smoky one. Try to keep hedge clippings under cover until dry before burning. Softer material such as weeds and spent annuals can be composted.

Pick the right time - not the first fine day after rain. Everyone will have washing out and windows open. Not a still day, when the smoke can hang about for hours. An overcast day with some wind is the least likely to upset the neighbours.

Burning in a ventilated incinerator produces a quicker burning fire and therefore less polluting smoke. Don't forget you can stand upwind of your bonfire to avoid smoke, but it may be going straight into your neighbour's house and garden and they can't!

*A Parishioner*



## ***OCTOBER***

- 5** Jubilee Club 'Venice & N. Italy' Illustrated talk. School 2.30 pm
- 7** Football: Elsworth V. Haddenham Res. Home.
- 11** W.I. 'The Great Train Robbery'. Talk. School 7.30 pm.
- 22** Football: Elsworth Crusaders v. Ely Crusaders. Home.
- 29** Football: Elsworth Crusaders v. Godmanchester Rovers. Home.

## ***NOVEMBER***

- 2** Jubilee Club: 'Cambridge Curiosities'. Talk. School 2.30.
- 8** W.I. 'Norway'. Slide show. School 7.30pm
- 8** N.W.R. Quiz night. Lordship Cottage 7.45 pm
- 11** Football: Elsworth v. Pymore. Home.
- 28** N.W.R. Discussion - video based. 8 pm.

## ***DECEMBER***

- 3** Football: Elsworth Crusaders v. Warboys. Home.
- 7** Jubilee Club: Christmas tea and entertainment. School 2.30 pm
- 13** W.I. Members Christmas Party. School 7.30 pm.
- 23** Football: Elsworth v. Sutton Unt. Home.