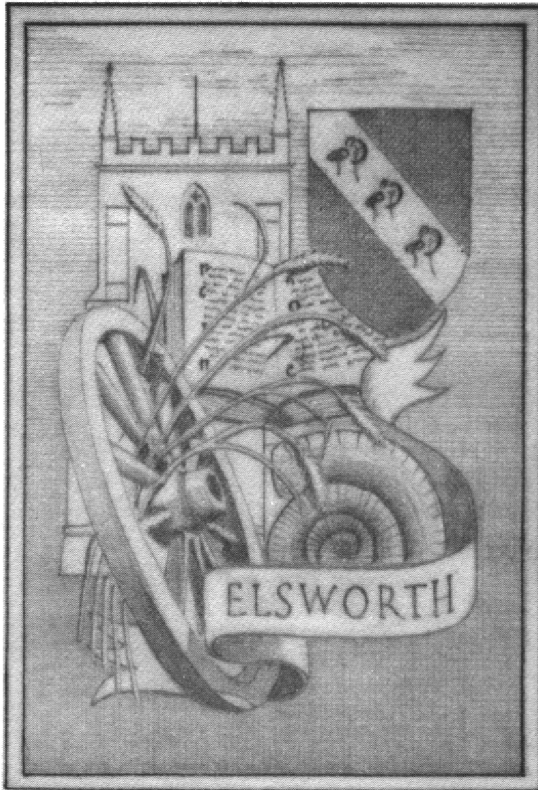


# The Elsworth Chronicle



**Issue No. 19**

**December 2005**

**Editor:** Alan Farrow. The Old Rectory, Elsworth,  
Cambridge CB3 8JQ Tel: 01954 267472

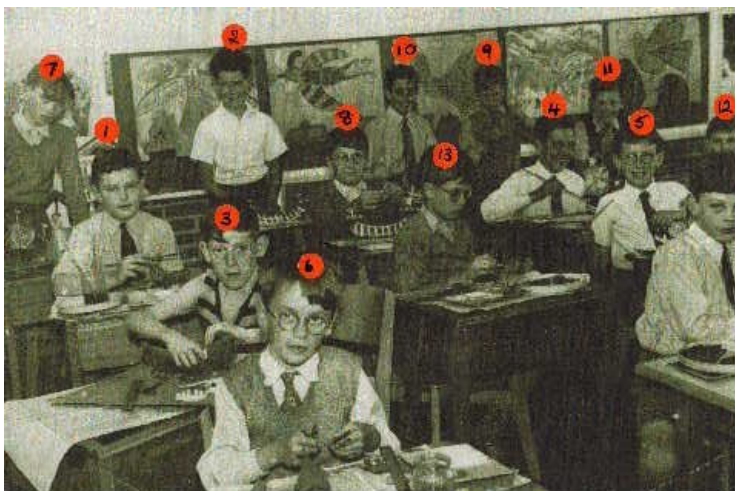
**Material for inclusion would be most welcome.**

**Printer:** Express Printing UK Ltd. 3 Milnyard Square,  
Orton Southgate, Peterborough PE2 6GX.  
Tel: 01733 230800

---

## SCHOOL PHOTO

Readers may remember seeing the 1954 classroom photograph in Issue 18 of this magazine. We are grateful to Jan & John Throssell for suggesting the names below:



1. Gordon Sandercock
2. Trevor Grange
3. One of the Rolt twins
4. Ray Misedine
5. Roger Fenson
6. Norman Warboys
7. Ivor Warboys
8. Peter Shaw from Knapwell
9. John Reed
10. David Smith from Boxworth
11. Bernard Lakeman
12. Victor Saywell
13. Roger Bell from Connington

## AWARD FOR WENDY WILLIAMS



Group Captain Wendy Williams is the Director of Nursing Services (Royal Air Force) and Matron-in-Chief Princess Mary's Royal Air Force Nursing Service. A resident of Brook Street, Elsworth, she was awarded the Royal Red Cross in the Queens Birthday Honours List for her pursuit of nursing excellence with the Princess Mary's Royal Air Force Nursing Service. Wendy was instrumental in forging strong relationships between the National Health Service and the military, while working as the Senior Nursing Officer at the Ministry of Defence Hospital Unit at Peterborough. As a result of her dedication and hard work, the new Surgical High Dependency Unit was created. Also, during the recent Iraq War, Group Captain Williams had the immense task of increasing bed capacity and organising an aeromedical holding facility at the Princess Mary's Hospital at Akrotiri, Cyprus. Her leadership was key to creating a team of regular and reserve medical personnel from all three Services and the United States Medical Services. (Cont.)

## Wendy Williams (Continued)

During hostilities, 450 patients were received and treated as a result of her precise planning and implementation. Wendy's main responsibilities were focused on her operational duties; however, she still maintained continual welfare and professional support for the non-military population at RAF Akrotiri.

Wendy received her award at Buckingham Palace in November and was accompanied for the occasion by her husband, Mick Petty, together with her sister and partner. Wendy has treasured memories of the day and recalls, 'In order to ensure that the right etiquette was observed, all the recipients were gathered together for a briefing prior to the ceremony. It was a marvellous experience to take in the atmosphere of the sumptuous waiting rooms that were elegantly adorned by priceless art. There were about 150 people receiving their awards that day, both military and civilian personnel, from every walk of life. At that stage, we were uncertain which senior member of the Royal Family would preside over the ceremony. A gasp of delight rippled through room when it was announced that Her Majesty The Queen would present the state awards. It was fascinating to talk to fellow recipients about their achievements as we waited patiently to be called forward. The investiture, held in the Ballroom at the Palace, was full of the pomp and ceremony that is rightly the envy of the world. Her Majesty was a very gracious lady, spending time to talk with each recipient as she pinned on their medals. She had been thoroughly briefed on aspects of my award citation, and her comments during our conversation made for a very personal and treasured memory. After the conclusion of the ceremony, we enjoyed mingling with the other recipients outside in the Palace Courtyard whilst official photographs were taken. We were delighted to meet Willard White, the famous baritone who had received his knighthood that day. Afterwards, Mick took us all to a surprise lunch at the Ritz to celebrate in style. It was a wonderful end to a very special day'.

# Heating oil?

*Are you paying too much?*

Ring me before you buy  
Deliveries direct to you  
by national / local suppliers

Jeremy Cole (01954) 719452

**agricole**

**You'll warm to the savings**

## **YOUR LOCAL COUNCILLORS**

### **ELSWORTH PARISH COUNCIL**

#### **Councillors**

Ian Maddison [Chairman] - Tel. 267347;  
Annie Howell - Tel. 22267324; Alan Farrow - Tel. 267472;  
Robin Grange - Tel. 267454; David Holland - Tel. 267887;  
Anne Muir - Tel. 267496; Anthony Taylor - Tel. 268042;  
Michael Taylor - Tel. 267561;  
James Witherow - Tel. 267979

#### **Clerk to the Council**

Elizabeth Sim-Tel. 267664  
E-mail. elsworthclerk@btinternet.com

### **DISTRICT AND COUNTY COUNCILLORS**

Our District and County councillors clearly take an active interest in the affairs of Elsworth and all conscientiously attend the bimonthly meetings of the Parish Council. Their contact details are noted below:

#### **District Council**

- Nick Wright, Marshall's Farm, Conington. CB3 8LW  
Tel: 01954 267202 E-mail: nickwright@djinter.net.
- Mark Howell, 2 Vinter Close, Papworth Everard. CB3 8RU  
Tel: 01480 831348 E-mail: mark@howellm43.fsnet.co.uk

#### **County Council**

- Mandy Smith, Ridgeley's Farm, High Street, Fen Drayton.  
CB4 5SJ Tel: 01954 230253 E-mail: mandy.smith43@tesco.net

## OBITUARY

### GEORGE ARMSTRONG



George Armstrong of Brockley Road lived in Elsworth for some 57 years following his posting here during the Second World War as a guard at the prisoner-of-war camp. While here he fell for a local girl – Noreen – and she for him, and they were married by Rev. Aubrey at Holy Trinity Church in January 1948.

At first they lived in Randall's Cottage when it constituted three dwellings but were to move to Brockley Road as the family increased in size. Noreen and George were blessed with three children, George, Carol and Denise, each of whom had two children in turn.

For much of his working life George was a porter at Papworth Hospital but his working days were curtailed by a road accident, which brought on a debilitating condition that greatly restricted his mobility.

Although known as George, his Christian name was in fact Matthew but George it became in Elsworth, stemming, no doubt, from “Geordie”, as he was a man from the north-east.

## **OBITUARY**

### **TERRY STEVENS**



It was with great sadness that his many friends in Elsworth received the shock news that Terry had died. Many had heard it almost with disbelief, for Terry had been active even on his final day in making arrangements on behalf of the Sports Club.

Terry's service to Elsworth was legendary and embraced so many activities. He was always willing to help those in need – it was Terry who collected and distributed medicines to the housebound; he was the one who weekly transported people to the day centre. A few years ago Elsworth was recipient of an award for its care of the elderly; it was principally Terry's efforts and enterprise that led to this commendation. (Cont.)



## Terry Stevens (Continued)

For as long as anyone can remember Terry was a keen sportsman and his successful career in the Elsworth cricket and football teams is captured in the team photographs decorating the walls of the pavilion. After his playing days were over, he devoted himself to supporting the games he loved so much, being not only fixture secretary for over 30 years but also, with Billy Knibbs and George Bosworth, taking responsibility for the maintenance of the sports field and the preparation of pitches and wickets. And there is more; over many years - from 1982-2003 - Terry served on the parish council, most conscientiously accepting the responsibilities incurred. It was fitting that this was recognised when in elections he topped the poll in 1991 and came second in 1994.

A devoted husband of Sue; father of Collin, Kathleen, and Mark and grandfather to eight, Terry lived life to the full. A crowded church on the day of the funeral was a well-deserved tribute.

---

## **NATIONAL WOMEN'S REGISTER**

Elsworth NWR is a thriving group that meets once every three weeks for lively entertaining meeting, which might involve informative talks, discussions, and evenings involving food and drink. New members are always most welcome; for information please contact either Shirley Emmerson [Tel. 01954 267583] or Gill Barnes [Tel.01954 267524].

## CHRISTOPHER PARISH AND HEART SURGERY AT PAPWORTH

Church Farm, Boxworth, the fine red-bricked principally 18<sup>th</sup> century (but 16<sup>th</sup> in part) farmhouse seen beyond extensive lawns on the northern side of the road through that village, has been the home of Christopher and Joan Parish for over 50 years. It is probably not known generally in our village that Christopher was the first cardio-thoracic surgeon at Papworth Hospital. In May last year he was interviewed about his life and work as part of the Papworth Oral Project by the Cambs. County Archives Department. The first excerpt will be found below in which he reflects on his wartime experiences and the impact of war on surgery prior to his appointment at Papworth. His early days at the hospital and the development of the heart unit will be featured in the next issue of the Chronicle.

### *The War Years - A Learning Experience*

*As a Major in the RAMC during the Second World War, I learned an important lesson - not to worry about what was going to happen. In the desert we were a few miles back from the front line in 8th Army at Alamein. When we got to Salerno, about nine in the morning, we were the first landing ship on the beach. We carried all our equipment in panniers, and walked for about a mile to an orchard, where we were operating on heads and chests by one o'clock. We worked through thirty-six hours non-stop before we had a rest. We just did the bellies and heads and chests that couldn't be moved to the hospital ships. On our right flank there was nothing between the Germans and us. In fact a Brigadier gave me a rifle and told me to get in a ditch. I showed him my Geneva Red Cross identity card and told him what to do with his rifle! My batman was killed within a few yards of me, and one of our corporals was killed ... The 88mm guns were firing over our heads, and the situation was pretty bleak, but it all resolved itself, and we*

*eventually moved into Naples via the Forum in Pompeii. We were stuck on another beach at Anzio for about three months. We were under fire the whole time. Mine was the only operating tent that wasn't hit. A shell landed two yards from my dugout but didn't explode. Patients I'd operated on were killed in postoperative tents. Altogether it was a very tense situation for three months. But one thing we learned was to get on with your job and not to worry; you might be there the next day, you might not and so nothing worried me.*

*War has always given a great boost to surgery. In the Franco-Prussian War, "The Impellor" for blood transfusions was first developed. It was only used in very small quantities but nevertheless the idea was there. In the Second World War, a pandemic of flu brought a lot of empyemas and lung infections, and the need to open the chest, to operate on it without the lung collapsing and the patient dying of asphyxia. The positive pressure ventilation of the lung by the trachea had been developed by Meltzer and Auer in 1909 and positive pressure ventilation enabled open chest surgery to be developed. In the Second World War, again, cardiac surgery developed. You couldn't have done those things in peacetime; you'd have ethical committees, patient's relatives, and lawyers on your back. During the War there was no alternative; you had a living patient, you had to do it. You didn't argue with anybody, you didn't consult anyone. There was nobody to consult!*

After the war Christopher returned to Manchester, where he worked as a consultant. But he knew Cambridge well as his family were Cambridgeshire farmers on both sides, and every year, and as a child, he had visited them in Swavesey and Boxworth. When the Consultancy at Papworth and Addenbrooke's was advertised in 1952 he applied and was appointed.

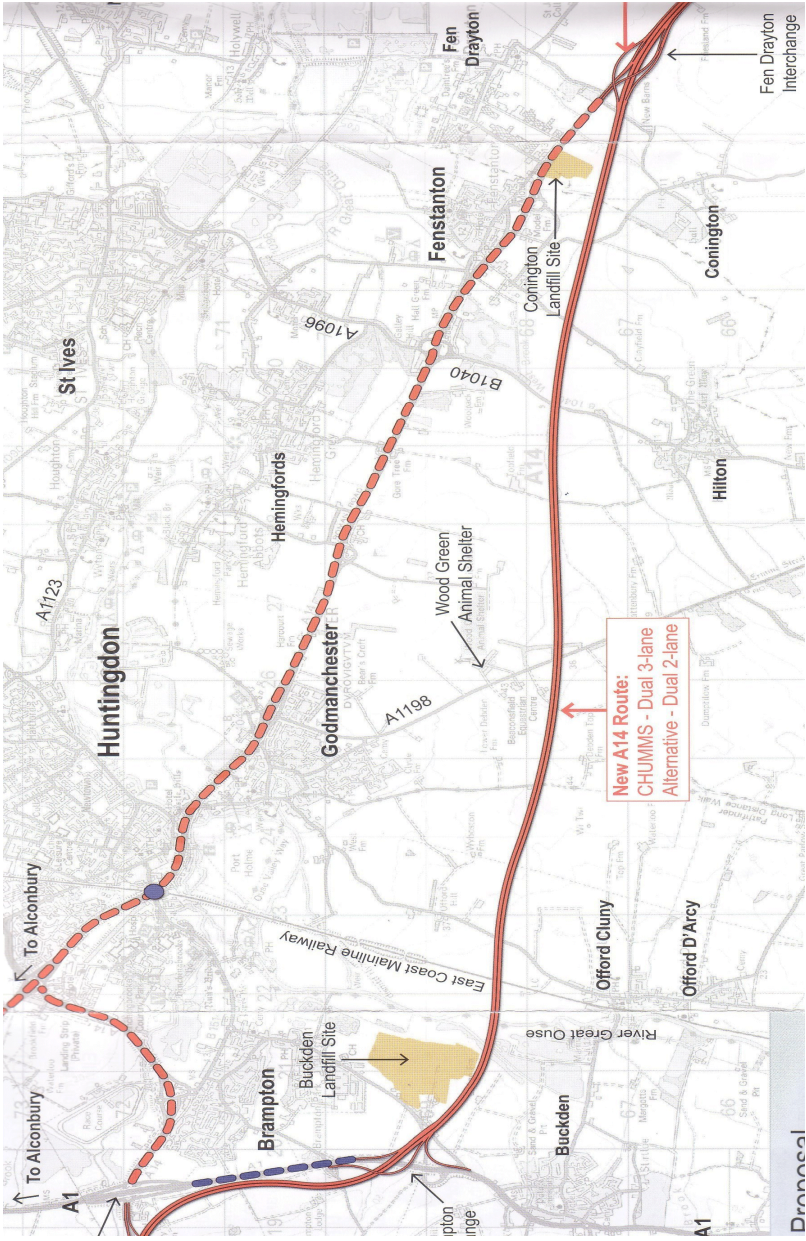
## **A14 IMPROVEMENTS**

Way back in 2001 the Cambridge to Huntingdon Multi-modal Studies [CHUMS] group recommended a scheme to improve the congested A14. It will probably be recalled that a major proposal was that a new dual three-lane carriageway should be built south of the present A14 between Fen Drayton and Ellington, linking with the A1 at Brampton. The present A14 would remain intact but serve only as a local road as the viaduct over the railway would be demolished.

An alternative proposal to the CHUMS scheme has subsequently been presented by the Highway Agency and has been the subject of public consultation this summer. This alternative scheme differs from that of CHUMS in that rather than routing both north-south and east-west traffic along the new road, there would be separation at Fen Drayton, with the present A14 road continuing to take north-south traffic, while the proposed new section would provide a separate route for east-west traffic. In the case of this alternative scheme, the railway viaduct would be re-constructed in its present form,

The CHUMS proposal for one trunk road taking both north-south and east-west traffic called for a dual three lane carriageway west of Fen Drayton. Under the alternative scheme, this would be amended to a dual two-lane road, as its traffic would be markedly lessened by the continued use of the present A14 west of Fen Drayton. It is claimed that the impact of the new road under this modification would be less than with the CHUMS proposal as it would take up less land and carry around 65% of the traffic. Maintaining the present A14 would also provide a possible diversion in the event of an accident leading to the closure of the new A14 or vice versa.

It would seem there is now a further complication that could put back the implementation of the work, whichever scheme is chosen. Residents of Offord Cluny are very concerned that the route of the new road would pass less than a mile from their homes and an application for a judicial review has been lodged. A preliminary hearing is scheduled for December when a judge will decide whether or not this action should proceed.



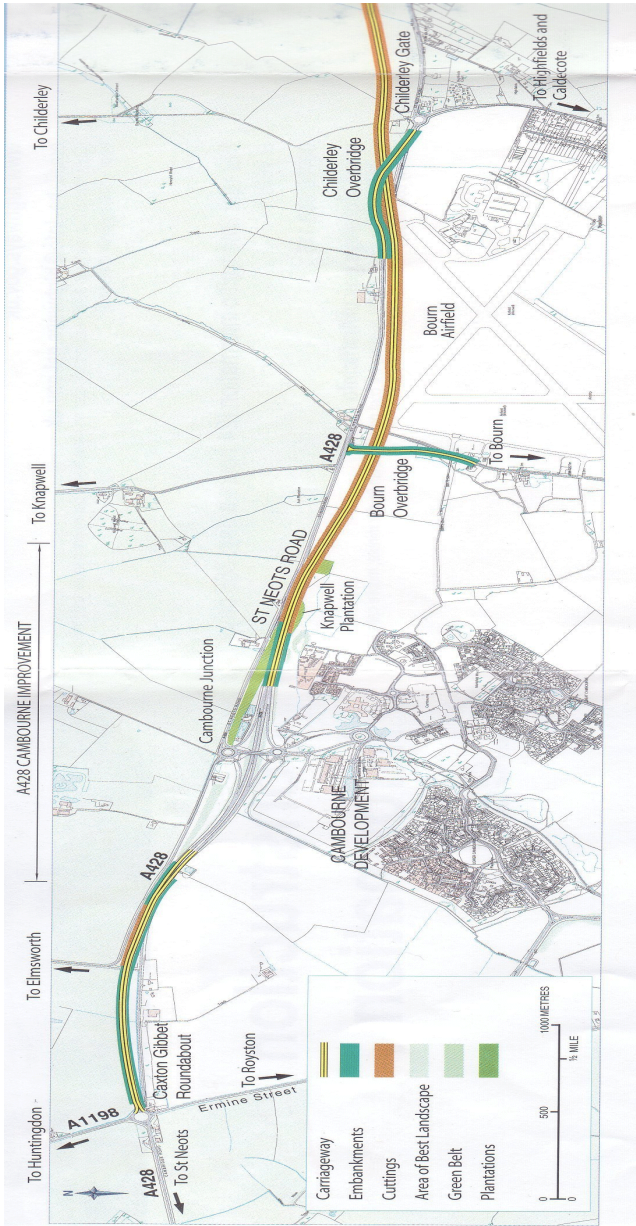
## **A428 - CAXTON GIBBET TO HARDWICK IMPROVEMENT SCHEME**

The Highways Agency is proposing to improve the A428 between the Caxton Gibbet roundabout and the existing dual carriage at Hardwick. It would seem an excellent scheme, which on its completion will provide a dualled road over the entire section between those two points. The joy of the project from the viewpoint of motorists from Elsworth is that the danger and difficulty of getting out of or into the Knapwell turn would no longer exist, as the present A428 on that section will remain as a local road, with the new dual carriageway being accessed by means of roundabouts at Hardwick for east-bound traffic, and at Cambourne for those travelling to the west. To facilitate the latter, the local road will be re-opened between the Knapwell turn and Cambourne.

It will be seen from the map that the planned new road from Cambourne will run to the south of the existing road to just before Childerley Gate, where it will cross the existing A428 before continuing on the north side to Hardwick. The existing A428 will be realigned to pass over the proposed dual carriageway at Childerley Gate. Similarly the side road leading to and from Bourn will be diverted and bridged over the proposed dual carriageway. It is planned that the work will be completed by the summer of 2007 - it has probably been noticed that preliminary work started in June this year.

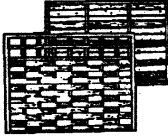
## **PAPWORTH BYPASS**

Another road scheme that will benefit Elsworth motorists, among others, is the proposed Papworth bypass. Work on it is imminent and the scheme is expected to be completed by December next year. It is estimated by the Dept. of Transport that the new road will reduce up to 60% of the through traffic from the village. For Elsworth motorists, morning rush hour congestion at Kisby's Hut would become but a memory.



# ACORN TREES & LANDSCAPING

POLLARDING, FELLING, TOPPING, PRUNING



All kinds of Cherry, Fruit, Conifers and Silver Birch Trees carefully Pruned. Apple and Pear Trees a Speciality. Conifers Topped. All Rubbish Removed - All Roots Destroyed. Hedges Pruned and Trimmed or Uprooted. No job too large or too small

*For Estimates (given without obligation)*

**FOR YOUR FREE ESTIMATE PLEASE CALL:**

**01638 742266 or 07796 037240**



**HUGHES-PARRY**  
VETERINARY CLINIC

**OPENING TIMES**

**Monday, Tuesday, Thursday**  
8.30am - 8.30pm

**Wednesday and Friday**  
8.30am - 7.00pm

**Saturday**  
8.30am - 12noon

*Consultations by appointment*



- *A caring & personal service*
- *3 late evening surgeries each week*
- *Fully equipped surgery*
- *In-house laboratory*
- *X-ray & ultrasound facilities*
- *Microchipping & pets' passports*
- *Well pet clinics*
- *Puppy socialisation classes*
- *24 hour emergency service*

**34 High Street, Longstanton, Cambridge**

**01954 780027**  
[www.hughes-parryvets.co.uk](http://www.hughes-parryvets.co.uk)

*Branch surgery: 66 High Street, Cottenham, Cambridge Telephone: 01954 252122*



**NEW AREA ARTS DEVELOPMENT MANAGER  
GILLIAN HUNTER**



Would you like to see more live music or theatre performances in Elsworth? Are you interested in joining a local art or book club or participating in workshops? I may be able to help! I'd like to introduce myself as the new Arts Development Manager at Swavesey Village College (SVC). I come to Swavesey having just completed my Masters degree in Arts Educational Research at Queens' college, Cambridge. Originally hailing from Vancouver, Canada, my background is in music performance and education, though I share a passion for all arts disciplines: music, theatre, dance, literature and the visual arts. As Arts Development Manager at SVC, I will be working with both school and community to develop arts projects and programmes across the Swavesey patch. I welcome any input you might have to offer on the subject of the arts in your community. You will find me most days at the college and can reach me on 01954 234476 or by email at [gillian.hunter@swaveseyvc.cambs.sch.uk](mailto:gillian.hunter@swaveseyvc.cambs.sch.uk).

## **JUBILEE CLUB**

The club is open to everyone in Elsworth and surrounding villages. Most meetings take place on the first Thursday in the month in Elsworth School Hall from 2.30pm to 4.30pm. We have a speaker or entertainment, afternoon tea and a raffle.

During the year we have had instructive talks on The Congo, The National Trust and the Trading Standards department. We have enjoyed musical nostalgia; looked back on the steam engine days; and seen [through slides] the bird life, plants and animals of India.

We had an outing to Sandringham House and a day in Southwold. In January we have a change of venue and meet in the George & Dragon for our New Year lunch.

New members would be made most welcome. Please come along and give us a try – you may even want to return! Contact Betty Simcock [267470] for details.

Betty Simcock

## **ELSWORTH, KNAPWELL & CONINGTON W.I.**

In October our speaker Marie Carden gave an inspiring talk on “Dogs for the Disabled” and at the end of the meeting she remarked on the warmth and friendliness of our members.

That sums up the atmosphere at our monthly meetings, which are held in Elsworth School on the second Wednesday of each month. It’s a really enjoyable get-together. We have about half an hour of discussion about local and federation business – projects in hand; areas of concern which national W.I. bring to our attention; details of activities, outings etc. followed by a talk or demonstration and finally refreshments.

In January we shall hear at first hand what it is like to trek along the Great Wall of China. One of our members did just that when she took part in a charity walk for Action Medical Research.

Later in the year we shall learn about Reflexology, the work of the RSPB at Knapwell and perhaps Elsworth will be transformed when we have had a demonstration on creating wonderful hanging baskets.

Visitors are welcome to join us for one or two meetings with no compulsion to join, though we hope they do! Contact Mary Norris [267260] or Isobel Farrow [267472] for details.

Isobel Farrow

# **Madingley Pre-Preparatory School**

**Madingley, Cambridge CB3 8AH**

- Small classes with individual tuition
- A happy and safe environment for 3 to 8 year olds
- Emphasis on early literacy and numeracy skills
- Specialist teachers for French and Music
- Excellent OFSTED report
- After school care if required
- Early years grants available
- Easy access from a wide area via M11, A14 or A428

<http://www.madingleyschool.co.uk>

Tel: 01954 210309 for an appointment to visit.

## **Phil Brannigan Groundworks**

**10 West Delph, Whittlesey, Peterborough PE7 1RG**

Marshall's Approved Contractor

Block paved driveways - Patios - Concrete

Landscaping - Fencing etc. - Free design

**T: 01733 205365 F: 01733 205365 M: 07947 159113**



## **WHEELIE BIN CLEANING**

[www.cs-services.org.uk](http://www.cs-services.org.uk)

**0800 0 12 11 47**



### **Your wheelie bin cleaned every 4 weeks from £3**

**(subject to offer)\***

C.S Services based in Fenstanton Cambs offer a reliable and environmentally friendly wheelie bin cleaning service.

**£18.00 half yearly (6 washes@ £3.00)\***

**£9.75 per quarter (3 washes @ £3.25)**

**£4.50 one-off wash**

For more information about our service, facts about bin hygiene, or to book a bin wash, please visit our website: [www.cs-services.org.uk](http://www.cs-services.org.uk)

**FREEPHONE**  
**0800 0 12 11 47**

# **MADINGLEY MULCH**

**YOUR GARDENS FAVOURITE PEOPLE**

***BARKS \* SOILS \* MULCHES \* COMPOSTS \*  
CONDITIONERS***

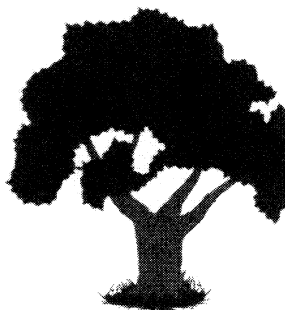
**ALL DELIVERED IN OUR BIG 1 METRE  
BAGS TO YOUR DOOR.**

***SOFT/SHARP SAND ~ 10/20mm GRAVELS ~  
BALLAST ~ LIMESTONE ~ CEMENT***

**CAN BE COLLECTED FROM OUR YARD  
OVER WEIGHBRIDGE OR DELIVERED  
LOOSE ON OUR  
TRANSPORT OR IN 1/2  
METRE BAGS**

***COME AND VISIT OUR  
NEWLY OPENED  
GARDEN/DIY SHOP***

***MADINGLEY ROAD  
COTON  
CAMBRIDGE CB3 7PH  
Tel: 01954 212144***



# FED UP REPAIRING YOUR FLAT ROOF?



## NOW YOU CAN REPLACE IT ONCE AND FOR ALL

- Flat roof problems solved permanently with Rubberbond EPDM roofing systems
- 20 year guarantee
- A value for money roofing system with a 40+ year proven life expectancy
- Total protection for all flat roofs

FOR A FREE SURVEY, FRIENDLY ADVICE AND  
NO OBLIGATION QUOTATION CALL

**WHITEHALL**  
**PLASTICS**.CO.UK  
The Roofline Specialist

*Swish*  
BUILDING PRODUCTS

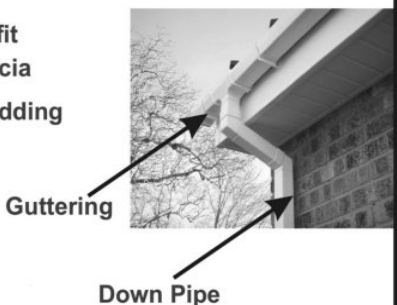
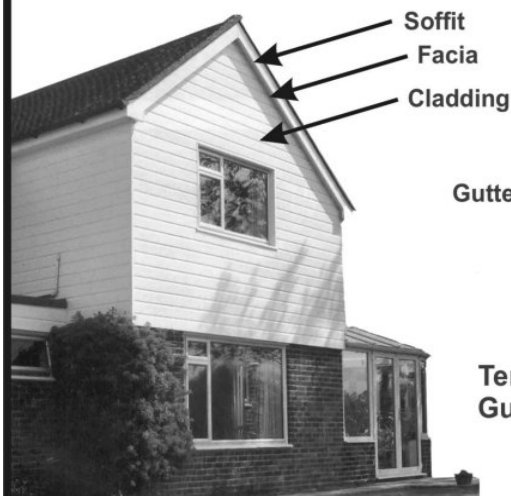
**RUBBERBOND**  
EPDM ROOFING  
SYSTEMS

**Marshall**  
**Tufflex**  
Building Products

[www.whitehallplastics.co.uk](http://www.whitehallplastics.co.uk) Tel: 01353 723799



# FED UP PAINTING YOUR ROOFLINE?



Ten Year Colour Fastness Guarantee on all Systems

## NOW YOU CAN REPLACE IT ONCE AND FOR ALL

- We offer a professional local service with 15 years experience
- All material are guaranteed plastic products
- Available in the following colours... black, white, mahogany and light oak

CALL NOW FOR OUR UNBEATABLE PRICES!  
[www.whitehallplastics.co.uk](http://www.whitehallplastics.co.uk) TEL: 01353 723799

*Swish*<sup>®</sup>  
BUILDING PRODUCTS

**WHITEHALL**  
**PLASTICS**.CO.UK  
The Roofline Specialist

**Marshall**  
**Tufflex**  
Building Products



## DATES FOR YOUR DIARY

- 5<sup>th</sup> Jan. Jubilee Club Lunch at the George & Dragon.  
7<sup>th</sup> Jan. Football: Elsworth v. J.M.Sports Res. Home  
11<sup>th</sup> Jan. W.I. "The Great Wall of China" Talk. School 7.30 pm.  
12<sup>th</sup> Jan. Table tennis: Elsworth Sports 2 v. Fulbourn 3. Home.  
19<sup>th</sup> Jan. Table tennis: Elsworth Sports 1 v. Gazeley 1. Home  
20<sup>th</sup> Jan. Whist Drive in the Pavilion. 7.30 pm. Adm. £3.00  
21<sup>st</sup> Jan. Football: Elsworth v. Camb. University Press "A". Home
- 2<sup>nd</sup> Feb. Jubilee Club: "The Congo" Talk. School at 2.30 pm.  
2<sup>nd</sup> Feb. Table tennis: Elsworth 1 v. Haddenham 1. Home.  
4<sup>th</sup> Feb. Football: Elsworth v. Eaton Socon "A". Home.  
8<sup>th</sup> Feb. W.I. meeting. School 7.30 pm.  
9<sup>th</sup> Feb. Table tennis: Elsworth 2 v. Gazeley 2. Home.  
11<sup>th</sup> Feb. Football: Elsworth v. Harston 1987  
25<sup>th</sup> Feb. Football: Elsworth v. Steeple Morden. Home.
- 2<sup>nd</sup> Mar. Jubilee Club meeting: School at 2.30 pm.  
2<sup>nd</sup> Mar. Table tennis: Elsworth 2 v. Ely 2. Home.  
8<sup>th</sup> Mar. W.I. meeting 7.30 Elsworth School  
16<sup>th</sup> Mar. Table tennis: Elsworth 1 v. Ellesmere 1. Home.  
30<sup>th</sup> Mar. Jubilee Club meeting. School at 2.30 pm.  
30<sup>th</sup> Mar. Table tennis: Elsworth 2 v. Soham Comrades 3. Home.
- 6<sup>th</sup> Apr. Table tennis: Elsworth 1 v. Ely 1. Home  
13<sup>th</sup> Apr. Table tennis: Elsworth 1 v. Fulbourn 1. Home.  
15<sup>th</sup> Apr. Football: Elsworth v. Hardwick "A". Home.  
20<sup>th</sup> Apr. Table tennis: Elsworth 1 v. Soham.