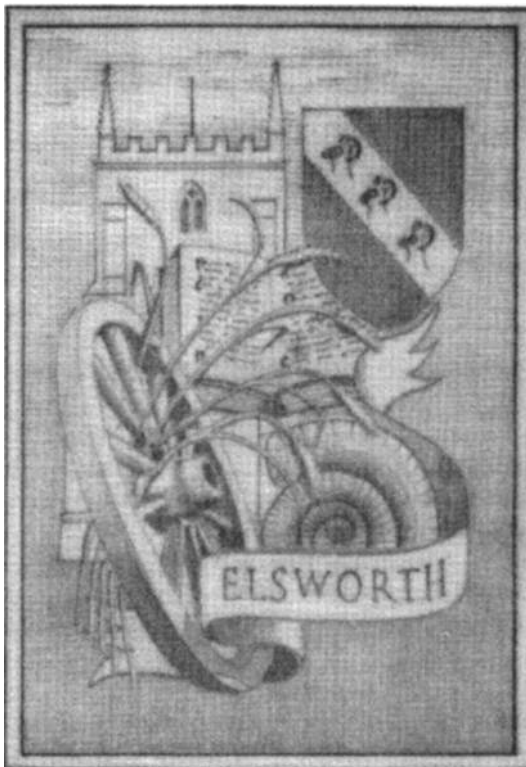


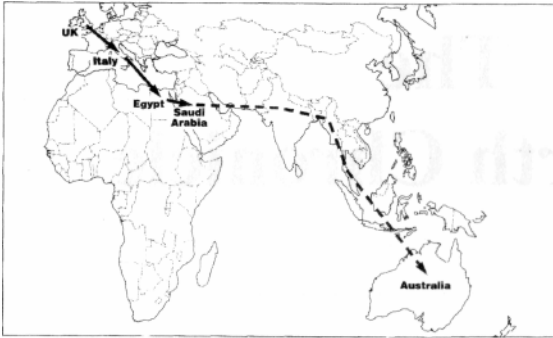
# The Elsworth Chronicle



**Issue No. 13**

**October 1999**

## LONDON – SYDNEY 1999



On their way ... a map showing the pilots' path, with their projected path in dotted lines, ending in Australia.



*Tim Gilbert*

Tim Gilbert from Smith Street and his business partner Martin Rutty, aim to be the first pilots to fly a single-engine piston helicopter (Robinson R44, G-BXUK) from London to Sydney. Their epic six week journey will mark the 80th anniversary of the pioneering flight by the Australian Smith brothers in a Vickers Vimy bi-plane. Tim and Martin are the co-founders of Speed Services plc, the largest independent same day courier company in the country, which is based in St. Ives. Both are experienced pilots, winners of the British Helicopter Championships, and this summer were the top British team in the World Championships held in Nordlingen in Germany

Departing at the end of September, their six week journey encompasses over 20 countries, spanning 14000 miles, 150 flying hours and requiring around 60 fuel stops. Although the journey is fully funded by Tim and Martin, they have decided to use the trip to raise money for SOS Children's Villages UK, which is based in Cambridge. SOS Children's Villages UK raises funds for the worldwide work of SOS Children's Villages, who are this year celebrating their 50th anniversary. They hope to raise enough money to fund the **construction** of a Family House in the SOS Children's Village in Irbid, Jordim, which has been selected as a Jubilee project.

The journey began from Cambridge Airport on Friday September 24th.

The selection of the route was based on several criteria, with safety being the most important. The safe range of the Robinson R44 is in the region of 330 nautical miles and the journey has been planned in a series of stages. On some days Martin and Tim will fly two or even three stages, the length of them depending upon the conditions through which they have to fly. When flying over the ocean it is imperative to have enough fuel on board to allow for an aborted stage, which can mean either returning to the point of origin, or overflying a scheduled stop and having enough fuel to reach the destination.

The route took Martin and Tim through France, Belgium and Germany to Austria where they visited Innsbruck, the headquarters of the SOS Children's Villages, which was founded in 1949. Continuing south down through Italy, they crossed the Ionian Sea to Corfu. Crossing the Greek mainland to Corinth and then Athens Tim then turned south to Crete. From Crete they became the first civilian helicopter to enter Libya after the lifting of the air sanctions which followed the Lockerbie bombing. They flew directly into a huge military air base, just south of Tobruk, where they were welcomed by the commander. He insisted that they spent a day as his guest, visiting the war cemeteries around Tobruk and General Montgomery's office, which has been perfectly preserved. After leaving Libya Tim and Martin crossed Egypt, viewing the Pyramids from 4500ft, but not stopping.

After an unscheduled stop on a beach on the Sinai peninsula, when they ran out of daylight, the couple reached Jordan, for an important part of their adventure. In Irbid, Jordan's third city, SOS Children's Villages are building a new village to celebrate their jubilee. It is in this village that Tim and Martin want to build a family house for orphaned children with the money they raise from their trip.

From Jordan the pair crossed the desert of Saudi Arabia in two days making for the Gulf. In Bahrain the helicopter required its first service, after fifty hours of flying, since it left the U.K. two weeks before. At the time of writing Tim and Martin are in Fujairah in the United Arab Emirates. From here they will fly to Pakistan and then cross the highly sen-

sitive Indo-Pakistan border. It was along this border that India recently shot down a Pakistani reconnaissance plane, which it accused of violating its airspace. Crossing the Rann of Kutch to Ahmedabad, they will make for the Pink City of Jaipur and the Indian capital New Delhi before following the Ganges to Calcutta. Leaving India, by way of Chittagong in Bangladesh, they enter Myanmar or Burma which is also politically sensitive, but now they have Phuket, Penang, Kuala Lumpur and Singapore ahead of them.

The passage through the Indonesian archipelago remains the most dangerous part of the trip, even though they won't be going anywhere near East Timor. They have several long sea crossings and fuel stops on tiny remote islands as well as Borneo, Sulawesi and Irian Jaya (New Guinea). Horn Island is the first stop in Australia, from where they follow the Great Barrier Reef down the coast to Brisbane and Sydney and from there overland to Canberra, Melbourne and finally Adelaide. At Adelaide they will be greeted by representatives from the SOS Children's Village which was opened in 1997.

The ground support for the trip is being co-ordinated by James Howell, another Elsworth resident. He is responsible for making sure that there is the right kind of fuel at every stop, and that materials are in place along the way to support the venture.

Another important aspect of the arrangements is the co-ordination of the media. The launch was featured on the BBC, Anglia, Central and Sky Television, and the progress of the trip is being closely monitored by BBC Radio Cambridgeshire who have weekly interviews with Tim and Martin, often "On Air, In Air". The trip is also being followed by the Children's *programme Record Breakers*, and a documentary is being planned.

For Tim and Martin an important part of the trip is to let people follow their progress on the Internet, through their web site [www.speed.co.uk](http://www.speed.co.uk). The site is updated daily with digital photographs that are e-mailed back to James in Elsworth using the latest satellite technology.

*J.H.*

## A SUCCESSFUL YEAR AT ELSWORTH SCHOOL



In September 1998 I was wondering what I would find at Elsworth School. I suspect that many people in Elsworth were wondering what the new 'Acting Head' at the school would be like, too!

We plunged into a very busy year with the introduction of the new 'Literacy Hour', already feeling the pressure of the Ofsted inspection due after Christmas. The teachers found they were spending hours on preparation and at that stage we were short of suitable resources. The teachers spent some of their own money to buy what they needed! The children responded to the new challenges and by half term were already able to discuss texts in more depth, were enjoying playing with effective vocabulary and were beginning to get their ideas on to paper in a far more focussed way.

With the coming inspection and the strictures of the curriculum, could we produce a Christmas play? We all believe strongly that we should not allow the curriculum to become too narrow so we forged ahead with music and drama for "Christmas Around the World?" Rehearsal time was restricted but the previous experience of the children came to the fore and in no time we had a lively epic to present.

At the end of term a long crocodile set out for a Carol service at the

church - I believe this was a first - and our choir also came to the village Carol service.

At the beginning of March I was appointed to be the permanent headteacher and was delighted to be able to stay on in Elsworth.

Three weeks later the inspectors arrived. The church inspection came first with very pleasing results and several positive suggestions. Then the Ofsted inspectors moved into my office for three days. We all took a deep breath, crossed our fingers and plunged in! All three inspectors were experienced Primary headteachers and it was soon apparent that they were impressed by what they found at Elsworth School. We all began to relax and a good professional dialogue began to take place. I was relieved when the teachers began to smile again!

I met with the inspectors several times a day and began to hear about some 'powerful teaching' and 'outstanding lessons'. When he finally reported back to the school Governors after Easter, the Registered Inspector said we were one of the best 5% of schools in the country and the best he had inspected. (We knew he had inspected several hundred).

During October, we appointed Julie and Mike Lewis to be our new 'Cleaners-in-charge' and they have done a wonderful job. Mrs Rayment gave notice that she would leave at Christmas to take up a Deputy Headship in Cambridge. We appointed Miss Mitchell (now Mrs Stevens) to take her place in January, immediately before the inspection.

*Some quotes from our inspection report: -*

The school promotes high levels of attainment and very good progress. It encourages good attitude, behaviour, relationships and personal development. The teaching is very good overall, 13% is outstandingly good. The school makes outstanding provision for pupils' spiritual, moral, social and cultural development and provides very good support and guidance for pupils.

After a much needed break at Easter we returned to school to prepare for SATs, the tests for 7 and 11 year olds. This year the government paid for some extra coaching for two groups of children in maths and English. Year 6 had never worked so hard but their efforts paid off. 100% reached the Level 4 target in science, maths and English and you will see that Elsworth is at the top of the Cambridgeshire league table this year. Between 40% and 60% of the children also reached Level 5, the 13 year old standard. More than 50% of 7 year olds also reached the 9yr old level.

I think the thing we are most proud of is that we have managed to keep our broad curriculum of arts, sports and humanities as well as taking on all the government initiatives.

Class 4 composed music and wrote the lyrics for a millennium song competition organised nationally by Marks and Spencer. Out of the 2000 entries we moved on to the second round and had two days of support from a professional song writer. Although we have not got into the winning CD we have been asked to perform at St Edmundsbury Cathedral in November and our song will be put onto a Website: -The best part is we all love singing our new song!

The school is growing steadily. During the summer six families appealed for places above the number we are registered to take. We do feel strongly that families moving in to our four villages should be able to come to the local school so we are pleased that, the independent panel has, so far, allowed them in. We have appointed extra support staff to make sure we can keep a good adult/child ratio. We now have 122 pupils on roll.

What next? This term we have begun the new approach to numeracy with yet another national initiative. We are finding it a little easier to manage than the Literacy Strategy.

We continue to revise and improve on what we are doing and already have a few ideas up our sleeves for the future. Watch this space!

*Lesley Minter*

# AGE CONCERN CAMBRIDGESHIRE

## **We exist to improve the quality of life for Older People**

Age Concern Cambridgeshire's Visiting Scheme is expanding into South Cambridgeshire - as the new visiting scheme organiser for Cambridge and South Cambridgeshire I am keen to cover the whole region.

To make the scheme successful I need -

- 1. Volunteers** - caring people able to offer an hour a week to visit an older person for friendship and support. You will receive support and training from Age Concern and we pay expenses.
- 2. Service Users** - we need to hear of older people who would enjoy having a visitor on a regular basis.

I am keen to offer this service in your area, so I am seeking support from within the villages.

If you are interested and would like more information and a chat, please feel free to call me - 01223 506002. I look forward to hearing from you.

Barbara Simon  
Visiting Scheme Organiser  
The Cherry Trees Club  
St Matthew's Street  
Cambridge CB1 2LT  
Tel: 01223 506002



# PARISH COUNCIL NOTES

## Elections

1. At the elections in May, Mark Ellwood was selected as the District Councillor for the local area which covers seven parishes, obtaining a total overall of 389 votes to James McGregor's 299.

2. At the same time 14 candidates stood for 9 places on the parish council. The results were as follows, an asterisk indicating election on to the council. Maggie Blackman [66 votes]; Susan Bufton [71]; Alan Farrow\* [158]; Roger Fensom [120]; Jo Gilbert\* [122]; Robin Grange\* [146]; Annie Howell\* [130]; Hugh Hughes [65]; Louise Maddison [100]; David Nutty combe\* [123]; Maureen Stevens\* [127]; Terry Stevens\* [149]; Michael Taylor\* [125]; John Thurley\* [135].

At the first meeting of the new council, Alan Farrow was elected Chairman and Maureen Stevens Vice Chairman.

## Sub-committees

Membership of the sub-committees was decided as noted below.

Recreation & Welfare:	Annie Howell (convener), Maureen Stevens, Terry Stevens, Jo Gilbert.
Trees & Waterways:	Robin Grange (convener), David Nuttycombe, Alan Farrow.
Elsworth School Liaison:	Alan Farrow
Paths, roads, verges & lighting:	John Thurley (convener), Robin Grange, Michael Taylor.
Village Liaison:	Alan Farrow (convener), Maureen Stevens.
Planning:	Robin Grange (convener), all members.

## Millennium

Preparations to welcome the new millennium have given rise to much thought and discussion, the outcome of which is that it has been agreed to mark it with a permanent memento, the form of which will be decided by villagers, and to provide a framework for celebrations.

With regard to celebrations, the parish council views itself in this respect as an initiator and facilitator rather than a direct organising body as it is felt there is enthusiasm and expertise within the village but outside the council which should be tapped so as provide activities of a form which would prove popular. Public meetings were therefore called and as a consequence a millennium planning committee has been established with, in addition to individual members, representatives from the principal village organisations and the parish council.

A notification of a Millennium Fun Night has been circulated and is referred to on another page. To assist planning please do not delay in returning your form. Much work has already been done by Geoff Neaums in particular and a very good evening would seem in prospect.

In the summer - the first week in July - a Millennium Feast Week is planned with activities on each week-day evening, and culminating on the week-end with a carnival followed by a barn [or hall] dance/hog roast on Saturday the 8th July. The week will commence with a special church service on Sunday the 2nd July followed by a limited-overs fun cricket match [women and men combined] against Conington. The Elsworth team is not to be the regular side but is to be formed only from people in the village; please offer your services to Maureen Stevens. An outline of the provisional programme for the week is noted below:

Sunday 2nd	a] Church service	b] fun cricket match v Conington
Monday 3rd	a] Morris dancing	b] Quiz night*
Tuesday 4th	a] Croquet preliminary rounds*	b] Darts*
Wednesday 5th	W.I. open evening	

Thursday 6<sup>th</sup> Treasure hunt - N.W.R.  
 Friday 7<sup>th</sup> Village concert party  
 Saturday 8<sup>th</sup> a) Sports/carnival festival\*

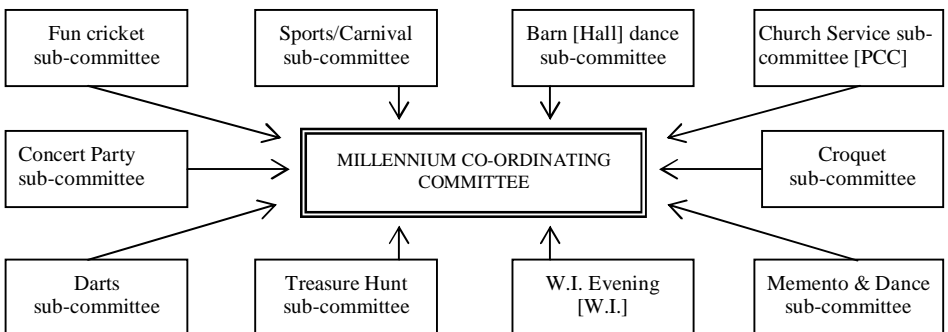
b) Barn [or Hall]  
 dance & hog  
 roast.

\*Inter-street competition.

In addition, spectators will be welcome at the school sports on an afternoon yet to be specified during the week. Visitors could perhaps bring picnic lunches.

### Millennium Organisational Framework

It could well be that there are people in Elsworth who would be prepared to join in assisting organising events but were not aware of how to become involved. The organisational framework is set out below; if you feel you would like to be involved with any sub-committee please make yourself known to any member of the millennium committee - if you are not sure who they are, Maureen Stevens, Geoff Neaums and Alan Farrow are three contacts. Please don't hesitate - you would be



made very welcome.

All sub-committees are represented on the co-ordinating committee.

## **Millennium Project**

There was a quite pleasing response both to the submission of possible projects and to the subsequent questionnaire. The six most favoured are noted below; should any reader wish to know how other schemes rate - there were 21 - Alan Farrow has the details.

1. Pavilion
2. Village Hall
3. Underground power lines
4. Historical map
5. Millennium wood
6. Brook management.

How the financial support for the pavilion is to be used awaits the outcome of the lottery bid, after which the Sports Club will be in a better position to advise.

## **South Cambridgeshire Local Plan - Summary of Elsworth P.C.'s response.**

1. In view of the existing traffic problems along the A14 and A428 in particular, and the increased congestion likely as a result of the consent already given for 1,000+ houses to be built at Papworth and 3,300 at Cambourne together with other developments, South Cambridgeshire District Council was asked that this area N.N.W. of Cambridge should be treated similarly to the area south of the city and be subjected to major building restraint regulations, at least until the roads and infrastructure are made adequate.
2. It was recommended that the village framework line should be amended in the vicinity of the school so as to allow for five dwellings and a few bungalows or starter homes when traffic problems in this area have been ameliorated.
3. Where appropriate, planners should give preference to starter homes in Elsworth.

4. Attention was drawn to possible surface water run-off from the new dual carriageway near Cambourne.
5. Support was encouraged for resource backing to facilitate community use of an indoor swimming pool at Swavesey Village College.
6. Attention was drawn to the poor bus service at Elsworth.

### **Rural Transport**

In view of the poor bus service provided for Elsworth, the parish council has asked the County Council to explore the possibility of funding a mini-bus service linking the village with principal bus routes. Questionnaires are to be prepared to determine likely support for such a service.

### **Lorry weight restriction**

Support has been given to a proposal seeking to impose weight restrictions on road vehicles — apart from farm vehicles and those serving the locality - on minor roads in the area. The matter is subject to further enquiry.

### **Brook Street footbridges**

An application has been made for public rights of way to be recognised over these bridges, the significance of which is that they will be maintained by the County Council.

### **Recreational equipment**

A basket-ball/netball post has been purchased and installed on the sports field.

## **Village sign roses**

Roses by the village sign have been paid for from the £50 generously donated by Tina and Julian Coles. It is felt the roses will be a permanent reminder of their time with us in Elsworth.

## **Best kept village competition**

Elsworth came first in its group in the first round of this competition ahead of Madingley, Graveley, Boxworth and Dry Drayton. However, we were eliminated in the next round, being placed behind Eltisley and Fen Drayton. Linton won the South Cambridgeshire District competition and Helpston the Fairhaven trophy for the county.

## **Annual Parish Meeting**

Although it is some time before the next annual parish meeting, please bear it in mind next May, for the forum provides a good opportunity for villagers to hold the parish council to account and to make positive contributions relating to the village. The parish council welcomes such involvement. Some might be reluctant to speak at the meeting; please remember it is acceptable to submit questions in advance - perhaps thereby improving the quality of the answers!

## PARISH PRECEPT

Some in the village speak knowingly about the parish precept, while others have no idea of what is meant. As it touches on the pockets/ purses of us all, Mark Ellwood has agreed to clarify the term.

1. What is a precept? Answer: an order to levy money under a rate [Chambers dictionary].
2. Why do parishes need precepts? Answer: to facilitate a reasonable quality of life for village residents.
3. Where does the money come from? Answer: Council tax payers.
4. Is the collection of precepts fair? Answer: yes, in the sense that payments are related to Council tax bands.
5. What do parishes do with the money? Answer: it varies from parish to parish. Examples of some items of expenditure in Elsworth are: upkeep of verges and open spaces (e.g. church grass by the memorial); brook maintenance; provision and maintenance of equipment (e.g. slide, swings etc. in the playing field; restoration of vehicular damage in Brook Street; upkeep of seats, bus shelter, gates etc; Elsworth Chronicle; flowers and plants; school servery maintenance; administration; village questionnaires; insurance etc. In addition, finance is in hand to pay for traffic calming measures - when sanctioned by the County Council - and to meet commitments to the sports club (pavilion project).
6. How can a council tax-payer influence the amount of the precept? Answer: the parish council should be contacted [see notice board].
7. What about special projects? Answer: the parish council can levy additional amounts of money via the precept. You pay more!
8. How much do I pay as a council tax-payer? Answer: consult the document sent with your council tax demand by South Cambs.

## **ELSWORTH & KNAPWELL & CONINGTON W.I.**

As a well-established national group for women, the W.I. is very aware of the need to keep up with our changing world as we move into a new millennium, as well as to maintain traditional standards. Our national federation, each year, discusses several important issues of the day ranging from health, environment, home life etc. Every member is made aware of the chosen subjects and given an opportunity to vote on them, so that as a caring group of people we can help to make a difference to the lives of the people in our country.

The W.I. has its own college, Denham College, near Oxford, which is open to all members (or partners too sometimes!) and the choice of courses is staggering. Some of us visited the college for a day this year and came away inspired to learn something new.

On a local level, your village W.I. is a thriving group, meeting on the second Wednesday of each month, except August, in the School Hall at 7.30pm. During the past year we have had talks on the work of a vet, tall-ship sailing for the disabled, cruising the Yangtze river, communication skills & musical evenings. Amongst other subjects coming up in the next few months are a decoupage demonstration, when we will have a chance to 'have a go', hearing about the work of the flying doctors in the Australian outback, flower arranging and of course our annual Christmas party when we can let our hair down! A full and interesting programme will be drawn up for next year including, in July an 'open' evening as part of our involvement in the village 'millennium celebration week', when we will have a 'fashion show with a difference'.

We belong to a group of six local W.I.'s, who meet twice a year, taking it in turns to be hosts, enabling us to arrange extra-special evenings. During the year, our own W.I. have paid visits to two SIMADS productions & visited Gifford Hall in Suffolk for a pleasant evening admiring sweet peas, roses, vines, animals etc. & finishing with wine-tasting & supper. We have held 'bring and buys', raffles and a cheese &



wine evening to help boost funds. Our Cambridgeshire federation organises a very varied programme each year, including day-courses, evening events, holidays, weekends away etc.

There really is something for everyone & we always welcome new ladies - so - don't be shy - give us a try!

*Gill Shillings (Secretary)*

---

**ROBIN HUGHES-PARRY & ASSOCIATES**  
**VETERINARY SURGEONS**

Full health care and advice for PETS, EQUINE & FARM LIVESTOCK

34 High Street, Longstanton, Cambridge  
CRAFTS HILL (01954) 780027



66 High Street, Cottenham, Cambridge  
COTTENHAM (01954) 252122

OPENING HOURS (consultations by appointment)

LONGSTANTON - Monday to Friday 8.30am - 7.00pm, Saturday 8.30 - 11.00am

COTTENHAM - Monday, Wednesday & Friday 8.30am - 12noon

Monday, Tuesday, Wednesday & Friday 4.30 - 7.00pm, Saturday 8.30 - 11.00am

**24 HOUR EMERGENCY SERVICE**

Stockists of Hills Science Diets, Iams and Eukanuba petfoods

**Madingley Pre-Preparatory School**

Madingley, Cambridge. CB3 8AH

- Small classes with individual attention;
- a happy and safe environment for 2½ to 8 year-olds;
- emphasis on early literacy and numeracy skills;
- specialist teachers for French, ICT and Music;
- excellent OFSTED report;
- pre and after school care if required;
- easy access from a wide area via M11, A14 or A428.

[www.indschools.co.uk/madingley](http://www.indschools.co.uk/madingley)

☎ 01954 210309 for an appointment to visit.

## OCTOBER WILDLIFE



### MUG ROOMS AND FUN GUYS

Though trees are losing leaves and all the flowers have gone, woodlands are not devoid of interest. Take a walk and discover such interesting characters as King Alfred's cakes, Dryads, saddles, stinkhorns, orange peels and Shaggy Inkcaps all in the name of fungi.

As fungi don't contain the green pigment of plants - chlorophyll - they must absorb their nutrients through the mycelium which is a series of tubes resembling spiders webs penetrating through the soil or wood.

Many fungi obtain food this way from dead or decaying organisms, while others are parasites feeding on the living bodies of plants and animals. Sulphur Polypore, a yellow-orange fan, like most bracket fungi is a parasite. Entering via a 'wound', the mycelium rots the heartwood, turning it red in the process. King Alfred's cakes, round burnt looking fungi, feed on Ash trees, causing the wood to rot.

King Arthurs cakes are also known as Cramp balls as people used to put them in their beds to prevent cramp. Stinkhorns are a fungi that you wouldn't want anywhere *near* your soft furnishings. Their smell of bad drains or rotting flesh attracts flies which eat its slimy green head and fly off to distribute its spores.

The best way to discover more about fungi is to take part in one of the Wildlife Trusts 'Fungi Forays' this autumn. Please telephone the Wildlife Trust on 01223 712400 for a copy of our latest wildlife events and activities.

# ELSWORTH NATIONAL WOMEN'S REGISTER

We hold most of our meetings in members' homes on different evenings at roughly monthly intervals, and try to make our programme as varied as possible to appeal to all tastes.

In February Rev. Dr. Michael Reiss introduced and led a lively and very topical discussion on ethics in genetic engineering and in October James Howell showed us some of his slides of Sri Lanka and India to illustrate his fascinating talk on the conflicts between tourism and archaeology.

Also during the year we visited the Corn Exchange to see the Royal Ballet perform a group of modern ballets, and cooked some "Old English" recipes for our theme evening.

A copy of our current programme is on the village notice board. Please contact one of our local organisers if you wish to come to our meetings (Marion Randerson - tel 267461 or Janet Barrett - tel 267627). New members are always welcome.

*Marion Randerson*

## CAMBRIDGESHIRE TRADING STANDARDS SERVICE

**"Can you help me..?"**



- *"I have just picked my car up from the garage and it's still not right..."*
- *"I have just paid cash of £800 to this man who says he is going to re-do my drive..."*
- *"The dress I bought yesterday has a hole in it, can I take it back..?"*
- *"I have ordered some china through a Sunday magazine and it still hasn't arrived even though they have cashed my cheque..."*

For advice to all on how to resolve your query, call our Helpdesk on 0645 376060 lines are open 9-5pm Mon-Fri, minicom is also available.

Offices at Huntingdon, March and Shelford.

**Or are you a Trader seeking advice on how to deal with a particular complaint or service that you provide.**

## ELSWORTH MILLENNIFUN NIGHT

Young and not so young in Elsworth frequently remark on the dearth of communal social activities in the village, particularly during the winter, and some older residents often make disparaging comparison with the spirit which existed within the community in former years.

Now is everyone's opportunity, long-standing resident and newcomer alike, to rekindle that spirit by sharing with your fellow villagers in Elsworth's Millennium Eve celebration, either as a performer or simply by attending and joining in the fun.

You will recently have received details of Elsworth's Millennifun night, and may already have responded; if not, in order to secure your ticket(s) and to ensure that the numbers justify the event, please return your reservation form to one of the committee members A.S.A.P, or if lost contact Geoff Neaum or Maureen Stevens.

Remember the success of this event depends on you, with entertainment provided by our neighbours and friends. Please give them every encouragement and support so that this can be the forerunners of more to follow.

As Millenniums don't often come,  
Missing this one would be really dumb,  
Why queue for the Dome  
Or spend it alone  
When in Elsworth there's MILLENNIFUN?

*Geoff Neaum*

## **VILLAGE MAINTENANCE PERSON WANTED**

**£4 an hour**

**Details from the Parish Clerk  
6, Brockley Road**

**or**

**Tel. 267345**

## **ELSWORTH SPORTS CLUB**

### **Football record 1998-1999 season**

Elsworth played a total of 33 league and cup matches, winning 16, drawing 7 and losing 10. In the league, in which we finished 5th, we won 10, drew 6 and lost 8.

In Cambs. Lower Junior cup, we went out in the first round after a reply with Steeple Bumstead. In the Reg. Haigh cup we did much better, beating Barton Mills 1-0, Huntingdon Town 4-1, Papworth 4-3 and in the semi-final against Marshall Sports we found ourselves 2-0 down at half-time but after a substitution and a little team adjustment, we came back to win the cup 3-2. Goal scorers in the final were D. Burgess 2, J. Gauld 1.

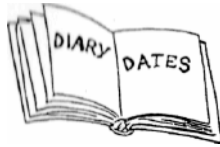
Player of the year: Danny Burgess.

Top goal scorer: Neil Lucas (25 goals).

Joint clubman of the year: Paul Hinson and David Triggs.

Manager's player of the year: Nick Howitt.

*Terry Stevens*



## ***NOVEMBER***

- 6** Elsworth football - v. Steeple Morden Res. (Home)
- 10** W.I. De-coupage Picture
- 13** Elsworth football - v. Warboys 'A' (Home)
- 17** N.W.R. Making Christmas Decorations
- 27** Elsworth football - v. Buckden Res. (Home)

## ***DECEMBER***

- 4** Elsworth football - v. St. Ives Rangers (Home)
- 11** Elsworth football - v. Eaton Res. (Home)
- 24** Christmas Eve service 11.45 pm
- 31** Millennium church service 4 pm
- 31** Millennifun - School Hall

## ***JANUARY***

- 1** Millennium church service 12 noon
- 8** Elsworth football - v. Soham Unt. (Home)
- 10** N.W.R. 'Into the Millenium'
- 12** W.I. Flying Doctor [Aus. Outback]

## ***FEBRUARY***

- 1** N.W.R. Planning meeting
- 5** Elsworth football - v. Ely City 'A' (Home)
- 9** W.I. Musical Reflections [Autobiography]
- 12** Elsworth football - v. Cottenham Unt. (Home)
- 19** Elsworth football - v. Witchford '96' (Home)
- 23** N.W.R. Meeting at the Golden Ball, Boxworth

## ***MARCH***

- 8** W.I. '2,000'
- 18** Elsworth football v. Lakenheath Res. (Home)

**Note.** In addition to the above, the times of regular church services will be found on the church notice board.